
TECHNICAL MANUAL

**DIRECT SUPPORT AND GENERAL SUPPORT MAINTENANCE
REPAIR PARTS AND SPECIAL TOOLS LIST
(INCLUDING DEPOT MAINTENANCE REPAIR PARTS AND SPECIAL
TOOLS)
FOR
RADIAC SET AN/PDR-56F (NSN 6665-01-113-9530)**

HEADQUARTERS, DEPARTMENT OF THE ARMY

1 AUGUST 1986

**DIRECT SUPPORT AND GENERAL SUPPORT MAINTENANCE
REPAIR PARTS AND SPECIAL TOOLS LIST
(INCLUDING DEPOT MAINTENANCE REPAIR PARTS AND SPECIAL TOOLS)
FOR
RADIAC SET AN/PDR-56F (NSN 6665-01-113-9530)**

Current as of 22 May 1986

REPORTING ERRORS AND RECOMMENDING IMPROVEMENTS

You can help improve this manual. If you find any mistakes or if you know of a way to improve the procedures, please let us know. Mail your letter, DA Form 2028 (Recommended Changes to Publications and Blank Forms), or DA Form 2028-2 located in back of this manual direct to Commander, US Army Communications-Electronics Command and Fort Monmouth, ATTN: AMSEL-ME-MP, Fort Monmouth, NJ 07703-5007.

In either case, a reply will be furnished direct to you.

Table of Contents

| | | <i>Page</i> | <i>Illus Figure</i> |
|---------|---|-------------|-------------------------|
| Section | I. Introduction | 1 | |
| | II. Repair Parts List | 1-1 | |
| Group | 00 Radiac Set AN/PDR-56F..... | 1-1 | 1 |
| | 01 Radiacmeter | 2-1 | 2 |
| | 0101 Cover Assembly (See Group 01 for parts) | | |
| | 010101 Meter Linkage Assembly (See Group 01 for parts) | | |
| | 010102 Meter Light Assembly (See Group 01 for parts) | | |
| | 010103 PC Board Assembly | 3-1 | 3 |
| | 0102 Radiac Case, Source | 4-1 | 4 |
| | 02 Main Probe Assembly (Includes Emitter Follower | 5-1 | 5 |
| | 0201 Main Probe Case Assembly (See Group 02 for parts) | | |

***This manual supersedes TM 11-6665-245-34P, 27 January 1983.**

Table of Contents-Continued

| | | | | |
|------------------|------|--|-----|---|
| | | 020101 Main Probe Window Assembly (See Group 02 for parts) | | |
| | 03 | Auxiliary Probe Assembly | 6-1 | 6 |
| | | 0301 Auxiliary Probe Window Assembly (See Group 03 for parts) | | |
| | 04 | X-Ray Probe Assembly | 7-1 | 7 |
| | | 0401 PCB Assembly | 8-1 | 8 |
| Group Section | 05 | Case, Radiac Set D4609 | 9-1 | 9 |
| | III. | Special Tools List (Not applicable) | | |
| | IV. | National Stock Number and Part Number | | |
| | | Index | I-1 | |

SECTION I INTRODUCTION

1. Scope

This manual lists and authorizes spares and repair parts; special tools, special test, measurement, and diagnostic equipment (TDME); and other special support equipment required for performance of direct support and general support maintenance of direct support and general support maintenance of the AN/PDR-56F. It authorizes the requisitioning, issue, and disposition of spares, repair parts and special tools as indicated by the source, maintenance and recoverability (SMR) codes.

2. General

This Repair Parts and Special Tools List is divided into the following sections:

a. Section II. Repair Parts List. A list of spares and repair parts authorized by this RPSTL for use in the performance of maintenance. The list also includes parts which must be removed for replacement of the authorized parts. Parts lists are composed of functional groups in ascending numeric sequence, with the parts in each group listed in ascending item number sequence. Figure numbers are listed directly beneath the group header.

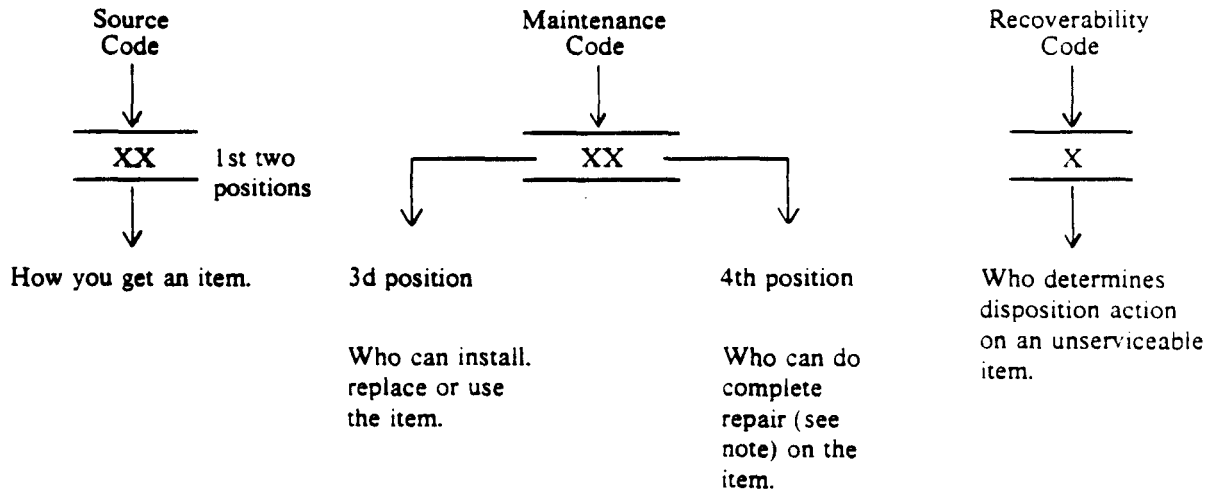
b. Section III. Special Tools List. Not applicable.

c. Section IV. National Stock Number and Part Number Index. A list, in National item identification number (NIIN) sequence, of all National stock numbered items appearing in the listing, followed by a list in alphabetic sequence of all part numbers appearing in the listings. National stock numbers and part numbers are cross-referenced to each illustration figure and item number appearance.

3. Explanation of Columns (Section II and III)

a. Item No. (Column(1)). Indicates the number used to identify items called out in the illustration.

b. SMR Code (Column(2)). The source, maintenance, and recoverability (SMR) code is a five-position code containing supply/requisitioning information, maintenance category authorization criteria, and disposition instruction as shown in the following breakout:



NOTE

Complete repair: Maintenance capacity, capability, and authority to perform all corrective maintenance tasks of the "Repair" function in a use/user environment in order to restore serviceability to a failed item.

(1) *Source Code.* The source code tells you to get an item needed for maintenance, repair, or overhaul of an end item/equipment. Explanations of source codes follows:

Code

Explanation

PA
PB
PC
PD
PE
PF
PG

Stocked items; use the applicable NSN to request/requisition items with these source codes. They are authorized to the category indicated by the code entered in the third position of the SMR code.

NOTE

Items coded PC are subject to deterioration.

KD
KF
KB

Items with these codes are not to be requested/requisitioned individually. They are of a kit which is authorized to the maintenance category indicated in the third position of the SMR code. The complete kit must be requisitioned and applied

MO—Made at org/AVUM category
MF—Made at DS/AVUM category
MH—Made at GS category
ML—Made at Specialized Repair Activity (SRA)
MD—Made at Depot

Items with these codes are not to be requested/requisitioned individually. They must be made from bulk material which is identified by the part number in the description and usable on code (UOC) column and listed in the Bulk Material group of the repair parts list. If the item is authorized to you by the third position code of the SMR code, but the source code indicates it is made at a higher category, order the item from the higher category of maintenance.

AO—Assembled by org/AVUM category
AF—Assembled by DS/AVIM category
AH—Assembled by GS category
AL—Assembled by SRA
AD—Assembled by Depot

Items with these codes are not to be requested/requisitioned individually. The parts that make up the assembled item must be requisitioned or fabricated and assembled at the category of maintenance indicated by the source code. If the third position code of the SMR code authorizes you to replace the item, but the source code indicates the item is assembled at a higher category, order the item from the higher category of maintenance.

| <i>Code</i> | <i>Explanation</i> |
|--|---|
| XA-Do not requisition an "XA" coded item. Order its next higher assembly. | XD-Item is not stocked. Order an "XD" coded item through normal supply channels using the FSCM and part number given, if no NSN is available. |
| XB-If an "XB" item is not available from salvage, order it using the FSCM and part number given. | |
| XC-Installation drawing, diagram, instruction sheet, field service drawing, that is identified by manufacturers part number. | |

NOTE

Cannibalization or controlled exchange, when authorized, may be used as a source of supply for items with the above source codes, except for those source coded "XA" or those aircraft support items restricted by requirements of AR 750-1.

(2) *Maintenance code.* Maintenance code tell you the category of maintenance authorized to USE and REPAIR support items. The maintenance codes are entered in the third and fourth positions of the SMR code as follows:

(a) The maintenance code entered in the third position tells you the lowest maintenance category authorized to remove, replace, and use an item. The maintenance code entered in the third position will indicate authorization to one of the following categories of maintenance.

| <i>Code</i> | <i>Application/Explanation</i> |
|--|--------------------------------|
| C—Crew or operator maintenance done within organizational or aviation maintenance. | |
| O—Organizational or aviation unit category can remove, replace, and use the item. | |

- F—Direct support or aviation intermediate category can remove, replace, and use the item.
- H—General support category can remove, replace, and use the item.
- L—Specialized repair activity can remove, replace, and use the item.
- D—Depot category can remove, replace, and use the item.

(b) The maintenance code entered in the fourth position tells whether or not the item is to be repaired and identifies the lowest maintenance category with the capability to do complete repair (i.e., perform all authorized repair functions). This position will contain one of the following maintenance codes.

NOTE

Some limited repair may be done on the item at a lower category of maintenance, if authorized by the Maintenance Allocation Chart (MAC) and SMR codes.

| <i>Code</i> | <i>Application/Explanation</i> |
|--|--|
| O—Organizational or aviation unit is the lowest category that can do complete repair of the item. | Z—Nonreparable. No repair is authorized. |
| F—Direct support or aviation intermediate is the lowest category that can do complete repair of the item. | B—No repair is authorized. (No parts or special tools are authorized for the maintenance of a "B" coded item). However, the item may be reconditioned by adjusting, lubricating, etc., at the user category |
| H—General support is the lowest category that can do complete repair of the item. | |
| L—Specialized repair activity (designate the specialized repair activity) is the lowest category that can do complete repair of the item. | (3) <i>Recoverability code.</i> Recoverability codes are assigned to items to indicate the disposition action on unserviceable items. The recoverability code is entered in the fifth position of the SMR Code as follows: |
| D—Depot is the lowest category that can do complete repair of the item. | |

Recoverability

| Code | Application/Explanation |
|----------------|---|
| Z—Nonreparable | Item. When unservicable, condemn and dispose of the item at the category of maintenance shown in the third position of SMR Code. |
| O—Reparable | item. When uneconomically reparable, condemn and dispose of the item at organizational or aviation unit category. |
| F—Reparable | item. When uneconomically reparable, condemn and dispose of the item at direct support or aviation intermediate category. |
| H—Reparable | item. When uneconomically reparable, condemn and dispose of the item at general support category. |
| D—Reparable | item. When beyond lower category repair capability, return to depot. Condemnation and disposal of item not authorized below depot category. |
| L—Reparable | item. Condemnation and disposal not authorized below specialized repair activity (SRA). |

A—Item requires special handling or condemnation procedures because of specific reasons (e.g., precious metal content, high dollar value, critical material, or hazardous material). Refer to appropriate manuals/directives for specific instructions.

e. FSCM (Column (3)). The Federal Supply Code for Manufacturer (FSCM) is a 5-digit numeric code which is used to identify the manufacturer, distributor, or Government Agency, etc., that supplies the item.

d. Part Number (Column (4)). Indicates the primary number used by the manufacturer (individual, company, firm, corporation, or Government activity), which controls the design and characteristics of the item by means of its engineering drawings, specifications, standards, and inspection requirements to identify an item or range of items.

NOTE

When you use a NSN to requisition an item, the item you receive may have a different part number from the part ordered.

e. Description and Usable on Code(UOC) (Column (5)). This column includes the following information.

- (1) The Federal item name and, when required, a minimum description to identify the item.
- (2) Usable on code, when applicable (para 5).
- (3) The statement "END OF FIGURE" appears just below the last item description in Column (5) for a given figure in both section II and section III.

f. Qty (Column (6)). Indicates the quantity of the item used in the breakout shown on the illustration figure, which is prepared for a functional group, subfunctional group, or an assembly. A "V" appearing in this column in lieu of a quantity indicates that the quantity is variable and the quantity may vary from application to application.

4., Explanation of Columns (Section IV)

a. National Stock Number (NSN) Index.

(1) *Stock number column.* This column lists the NSN by National item identification number (NIIN) sequence. The NIIN consists of the last nine digits of the NSN. When using this column to locate an item, ignore the first four digits of the NSN. When requisitioning items use the complete NSN (13 digits).

(2) *Fig. column.* This column lists the number of the figure where the item is identified/located. The illustrations are in numerical sequence in sections II and III.

(3) *Item column.* The item number identifies the item associated with the figure listed the adjacent Fig. column. This item is also identified by the NSN listed on the same line.

b. Part Number Index. Part numbers in this index are

listed by part number in ascending alphameric sequence.

(1) *FSCM column.* This column lists the Federal supply code for manufacturer (FSCM).

(2) *Part number column.* This column indicates the part number assigned to the item.

(3) *Stock number column.* This column lists the National stock number for the associated part number and manufacturer identified in the part number and FSCM columns to the left.

(4) *Fig. column.* This column lists the number of the figure where the item is identified/located in sections II and III.

(5) *Item Column.* The item number is that number assigned to the item as it appears in the figure referenced in the adjacent figure number column.

5. Special Information

a. Usable on Code. The usable on code appears in the lower left corner of the description column heading. Usable on codes are shown as "UOC" in the description column (justified left) on the first line applicable item description nomenclature. Uncoded items are applicable to all models. Identification of the usable on codes used in this RPSTL are:

a. Associated Publications. The publications listed below pertain to the AN/PDR-56F and its components:
TM 11-665-245-12, Radiac Set AN/PDR-56F
TM 11-6665-245-12HR, Radiac Set AN/PDR-56F
TM 11-6665-245-34, Radiac Set AN/PDR-56F

6. How to Locate Repair Parts

a. When National stock number or part number is not known.

(1) *First.* Using the table of contents, determine the assembly group or subassembly group to which the item belongs. This is necessary since figures are prepared for assembly groups and subassembly groups, and listings are divided into the same groups.

(2) *Second.* Find the figure covering the assembly group or subassembly group to which the item belongs.

(3) *Third.* Identify the item on the figure and note the item number.

(4) *Fourth.* Refer to the Repair Parts List for the figure to find the part number for the item number noted on the figure.

(5) *Fifth.* Refer to the Part Number Index to find the NSN, if assigned.

b. When National stock number or part number is known.

(1) *First.* Using the index of National stock numbers and part numbers, find the pertinent National stock number or part number. The NSN index is in National item identification number (NIIN) sequence (para 4 *a* (1)). The part numbers in the part number index are listed in ascending alphameric sequence (para 4*b*). Both indexes cross-reference you to the illustration figure and item number of the item you are looking for.

(2) *Second.* After finding the figure and item number, verify that the item is the one you're looking for, then locate the item number in the repair parts list for the figure.

7. Abbreviations

Not applicable.

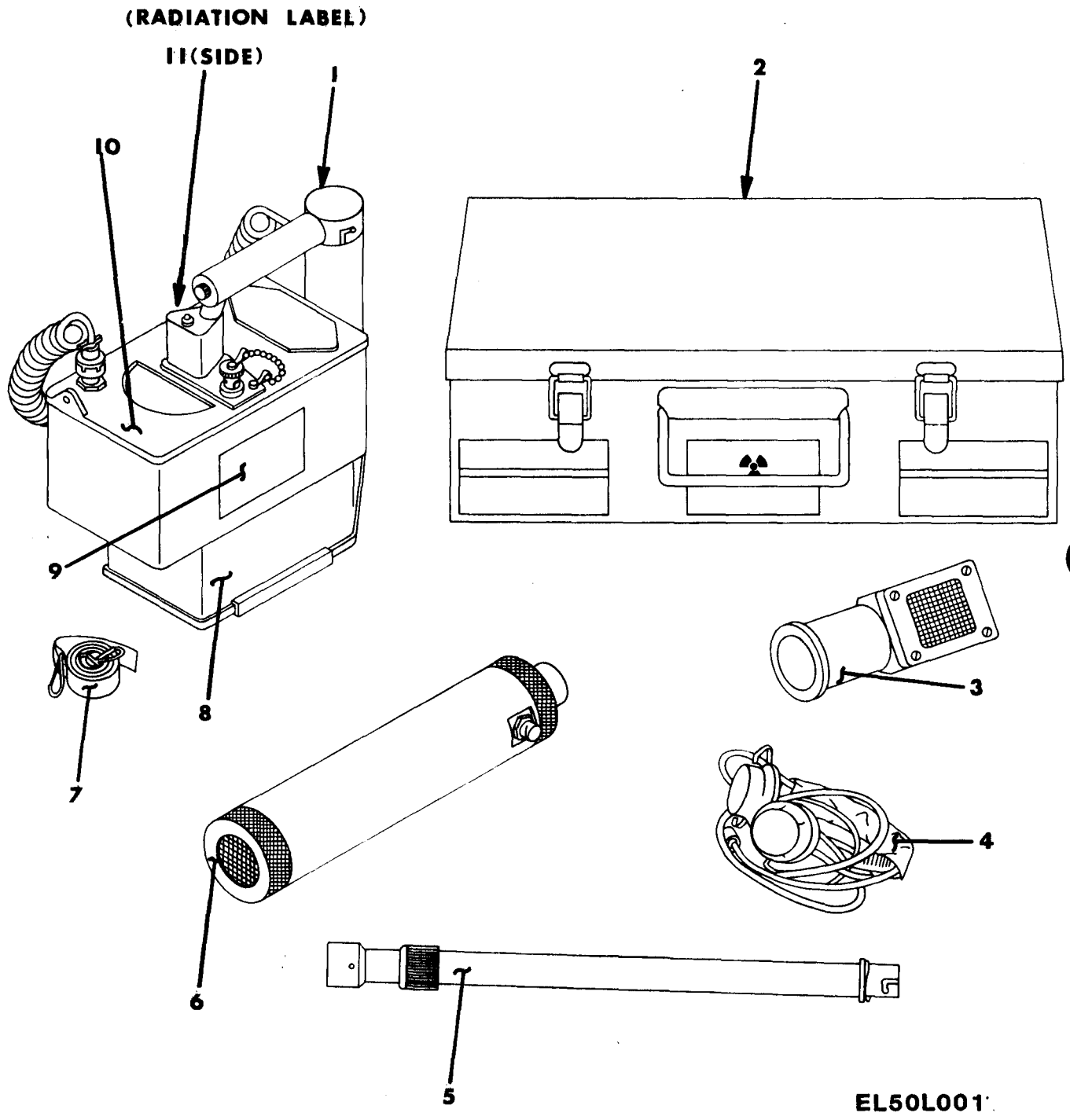


Figure 1. Radiac Set AN/PDR-56F

| SECTION II | | | | TM11-6665-245-34P | |
|--------------------------------|----------|-------|----------------|--------------------------------------|-----|
| (1) | (2) | (3) | (4) | (5) | (6) |
| ITEM NO | SMR CODE | FSCM | PART NUMBER | DESCRIPTION AND USABLE ON CODE (UOC) | QTY |
| GROUP 00 RADIAC SET,AN/PDR-56F | | | | | |
| FIGURE 1 | | | | | |
| 1 | PAHHH | 96696 | D3853 REV B | RADIACMETER | 1 |
| 2 | XBODD | 96696 | D4609 REV B | CARRYING CASE ASSY | 1 |
| 3 | PAOHH | 96696 | B4177 REV C | PROBE,RADIAC | 1 |
| 4 | PAOZZ | 80058 | H-43B/U | HEADSET,ELECTRICAL | 1 |
| 5 | XBHZZ | 96696 | B1112 REV D | PROBE HNDL EXTNSION | 1 |
| 5 | XAOZZ | 96696 | A3391 REV D | HANDLE EXTENSION | 1 |
| 6 | PADDD | 80058 | DT590A/PDR-56F | PROBE,RADIAC | 1 |
| 7 | PAOZZ | 96696 | B1031 REV B | CARRYING STRAP | 1 |
| 8 | XBHZZ | 96696 | D4179 | PROBE SUBASSEMBLY | 1 |
| 9 | XBHZZ | 96696 | B4625 | NAMEPLATE,RADIAC | 1 |
| 10 | XBHZZ | 96696 | D3854 REV B | PANEL ASSY | 1 |
| 11 | XBHZZ | 96696 | B1147 | LABEL,RADIATION | 1 |

END OF FIGURE

THIS PAGE INTENTIONALLY LEFT BLANK

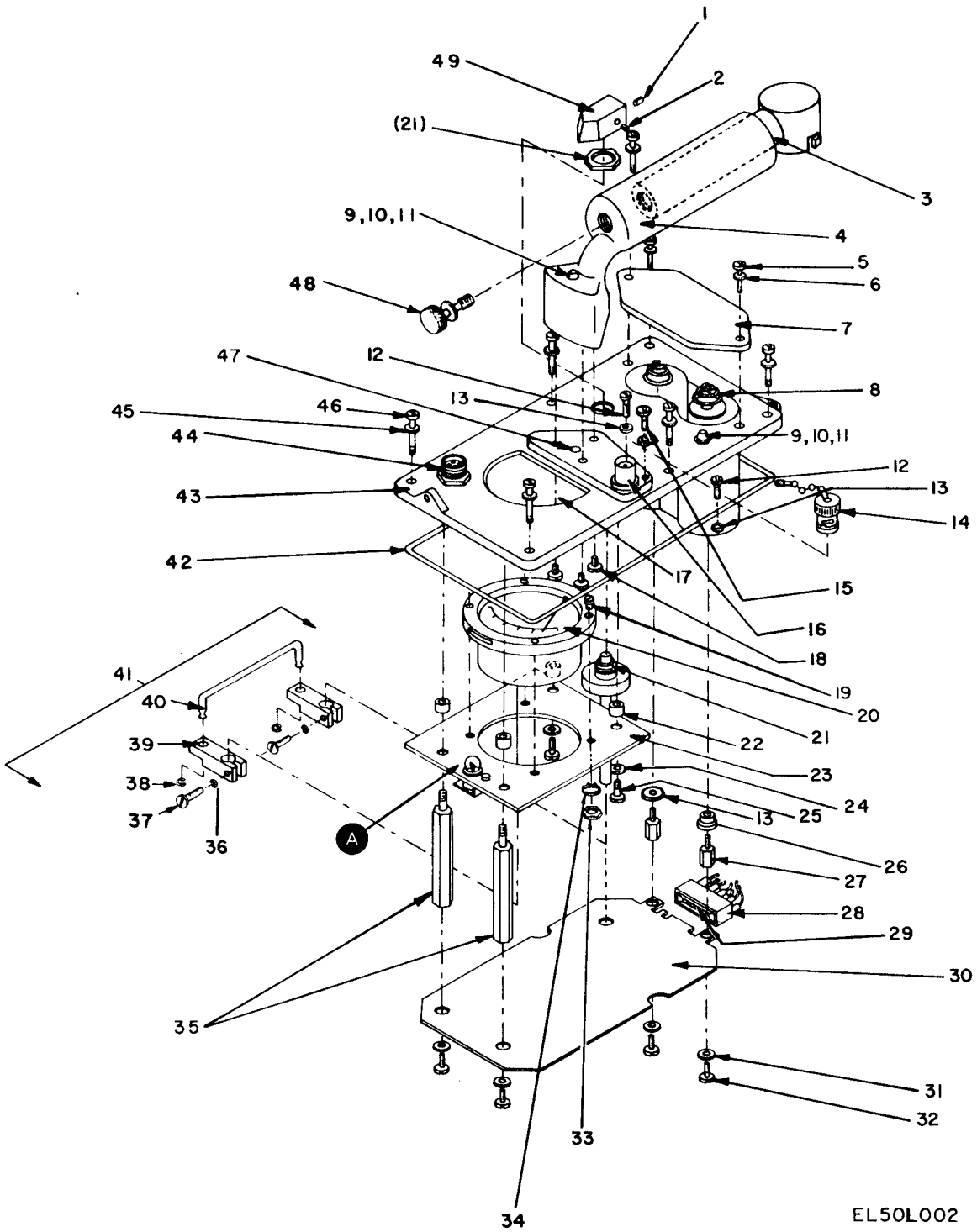
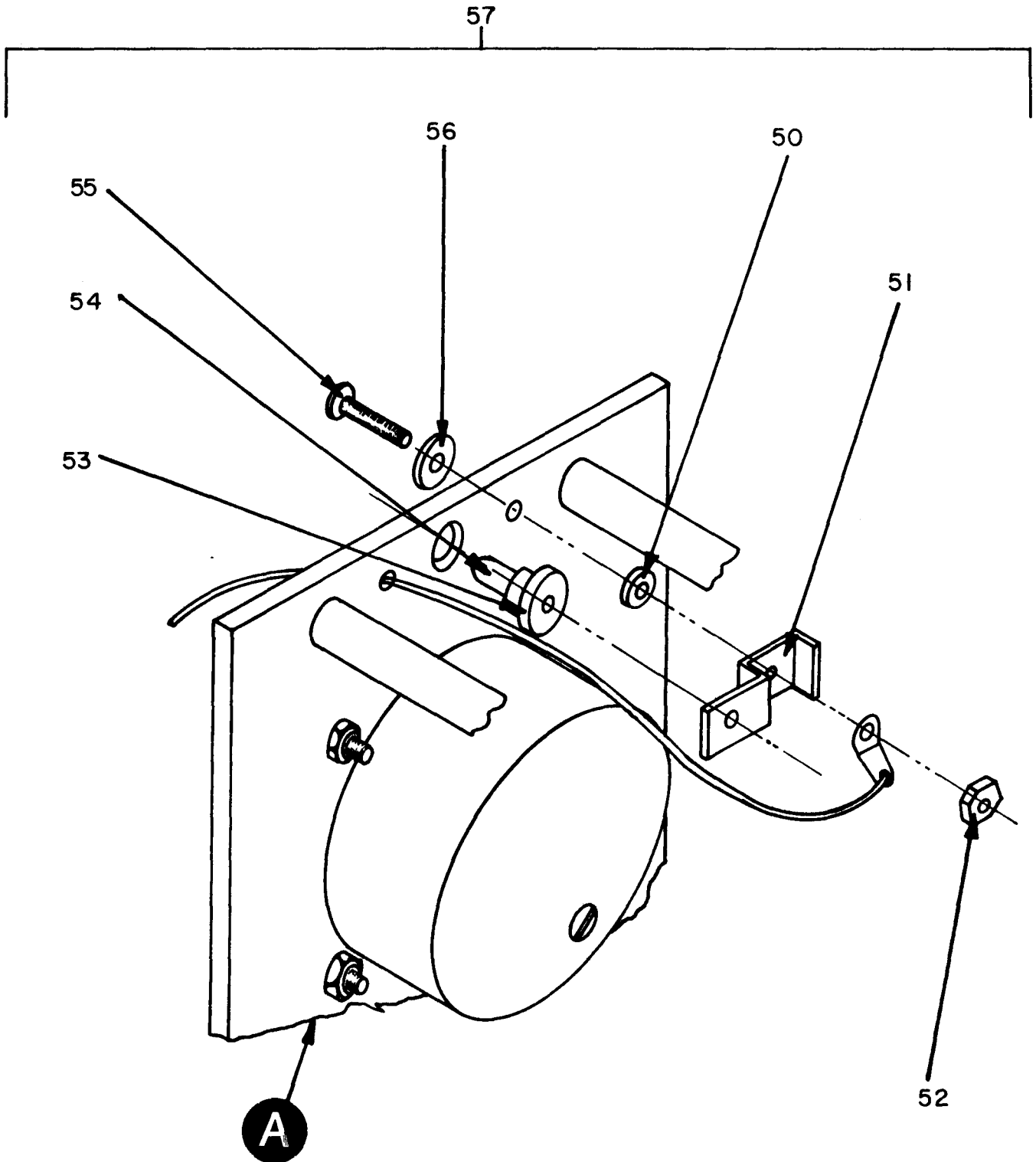


Figure 2. Radiometer (Sheet 1 of 2).



EL50L003

Figure 2. Radiometer (Sheet 2 of 2).

| SECTION II (1) ITEM NO | (2) SMR CODE | (3) FSCM | TM11-6665-245-34P (4) PART NUMBER | (5) DESCRIPTION AND USABLE ON CODE (UOC) | (6) QTY |
|---------------------------------|--------------------|-------------|--|---|------------|
| GROUP 01 RADIACMETER | | | | | |
| FIGURE 2 | | | | | |
| 1 | PAOZZ | 96906 | MS51963-20 | SETSCREW | 1 |
| 2 | PAOZZ | 96906 | MS51963-23 | SETSCREW | 1 |
| 3 | PAHZZ | 96696 | B1079 | PROBE HANDLE | 1 |
| 4 | XBHZZ | 96696 | C1025 REV G | PANEL HANDLE | 1 |
| 5 | XAOZZ | 96696 | B1088-2 | SCREW, CAPTIVE | 2 |
| 6 | XAOZZ | 83330 | 2670 | INSULATOR, WASHER | 2 |
| 7 | PAOZZ | 96696 | B3361 REV C | COVER, BATTERY RETAI | 1 |
| 8 | PAHZZ | 96696 | A3401 REV A | SPRING, BATTERY | 2 |
| 9 | PAHZZ | 81073 | 30YY-2034 | SWITCH, ROTARY | 2 |
| 10 | PAOZZ | 81349 | M5423/10-01 | BOOT, DUST AND MOIST | 2 |
| 11 | PAHZZ | 95272 | 6227-5SRS147-60 | PACKING, PREFORMED | 2 |
| 12 | PAHZZ | 96906 | MS35215-53 | SCREW, MACHINE | 2 |
| 13 | PAHZZ | 80063 | SM-B-416109-1 | WASHER, FLAT | 3 |
| 14 | PAOZZ | 81349 | M39012/25-0006 | COVER, ELECTRICAL CO | 1 |
| 15 | PAHZZ | 96906 | MS35215-52 | SCREW, MACHINE | 1 |
| 16 | PAHZZ | 02260 | UG625C/U | CONNECTOR COAXIAL | 1 |
| 17 | XBHZZ | 96696 | B1042 REV D | METER WINDOW | 1 |
| 18 | XBHZZ | 73734 | 62048 | SCREW, SEAL | 3 |
| 19 | PAHZZ | 96906 | MS35215-55 | SCREW, MACHINE | 4 |
| 20 | PAHZZ | 96696 | C1103 REV A | METER, MULTIPLE SCAL | 1 |
| 21 | XBHZZ | 96696 | B3907 REV A | ROTARY SHAFT | 1 |
| 22 | PAHZZ | 96696 | A3369 | SPACER, SLEEVE | 4 |
| 23 | XBHZZ | 96696 | B3858 REV B | METER MTG PLATE | 1 |
| 24 | PAHZZ | 96906 | MS35333-104 | WASHER, LOCK | 2 |
| 25 | PAHZZ | 96906 | MS35215-55 | SCREW, MACHINE | 2 |
| 26 | PAHZZ | 83330 | 2663 | INSULATOR, BUSHING | 1 |
| 27 | PAHZZ | 96696 | A3856 REV A | SPACER, SLEEVE | 2 |
| 28 | PAHZZ | 11769 | 00-6007-012-450A | CONNECTOR | 1 |
| 29 | XBHZZ | 11769 | 60-6007-48-28 | POLORIZING KEY | 1 |
| 30 | PAHHH | 96696 | D4517 REV A | CIRCUIT CARD ASSEMB | 1 |
| 31 | PAHZZ | 96906 | MS35333-71 | WASHER, LOCK | 2 |
| 32 | PAHZZ | 96906 | MS35215-53 | SCREW, MACHINE | 2 |
| 33 | PAHZZ | 96906 | MS35649-264 | NUT, PLAIN, HEXAGON | 4 |
| 34 | PAHZZ | 96906 | MS35333-71 | WASHER, LOCK | 4 |
| 35 | XBHZZ | 96696 | A3911 | STANDOFF | 2 |
| 36 | PAHZZ | 96906 | MS16633-9 | RING, RETAINING | 2 |
| 38 | PAHZZ | 96906 | MS35206-217 | SCREW, MACHINE | 2 |
| 39 | XBHZZ | 96696 | B1023 REV G | METER LINKAGE LEVER | 2 |
| 40 | PAHZZ | 96696 | B1018 REV C | CONNECTING LINK, RIG | 1 |
| 41 | XBHHH | 96696 | B3405 REV B | METER LINKAGE ASSY | 1 |
| 42 | PAHZZ | 25184 | 164-7507 | O, RING | 1 |
| 43 | XBHZZ | 96696 | D1019 REV Y | PANEL, ALUMINUM | 1 |
| 44 | PAHZZ | 71468 | MC14E10-6SN | CONNECTOR, RECEPTAC | 1 |
| 46 | PAHZZ | 96696 | B1088-1 | SCREW, CAPTIVE | 6 |
| 47 | PAHZZ | 96906 | MS28775-111 | PACKING, PREFORMED | 1 |
| 48 | PAHZZ | 96696 | B1081 | SCREW, CAPTIVE | 1 |
| 49 | PAOZZ | 96696 | B1082 REV E | DIAL, CONTROL | 1 |

| SECTION II | | TM11-6665-245-34P | | | | |
|------------|----------|-------------------|-------------|--------------------------------------|-----|--|
| (1) | (2) | (3) | (4) | (5) | (6) | |
| ITEM NO | SMR CODE | FSCM | PART NUMBER | DESCRIPTION AND USABLE ON CODE (UOC) | QTY | |
| 50 | PAHZZ | 96906 | MS15795-803 | WASHER, FLAT | 1 | |
| 51 | XBHZZ | 96696 | A3367 REV A | LIGHT CONTACT | 1 | |
| 52 | PAHZZ | 96906 | MS35649-242 | NUT, PLAIN, HEXAGON | 1 | |
| 53 | XBHZZ | 96696 | A3366 REV A | METER LT HOLDER | 1 | |
| 54 | PAHZZ | 96906 | MS25237-338 | LAMP, INCANDESCENT | 1 | |
| 55 | PAHZZ | 96906 | MS35206-214 | SCREW, MACHINE | 1 | |
| 56 | PAHZZ | 96906 | MS51859-4 | WASHER, FLAT | 1 | |
| 57 | XBHHH | 96696 | B3796 REV B | METER LIGHT ASSY | 1 | |

END OF FIGURE

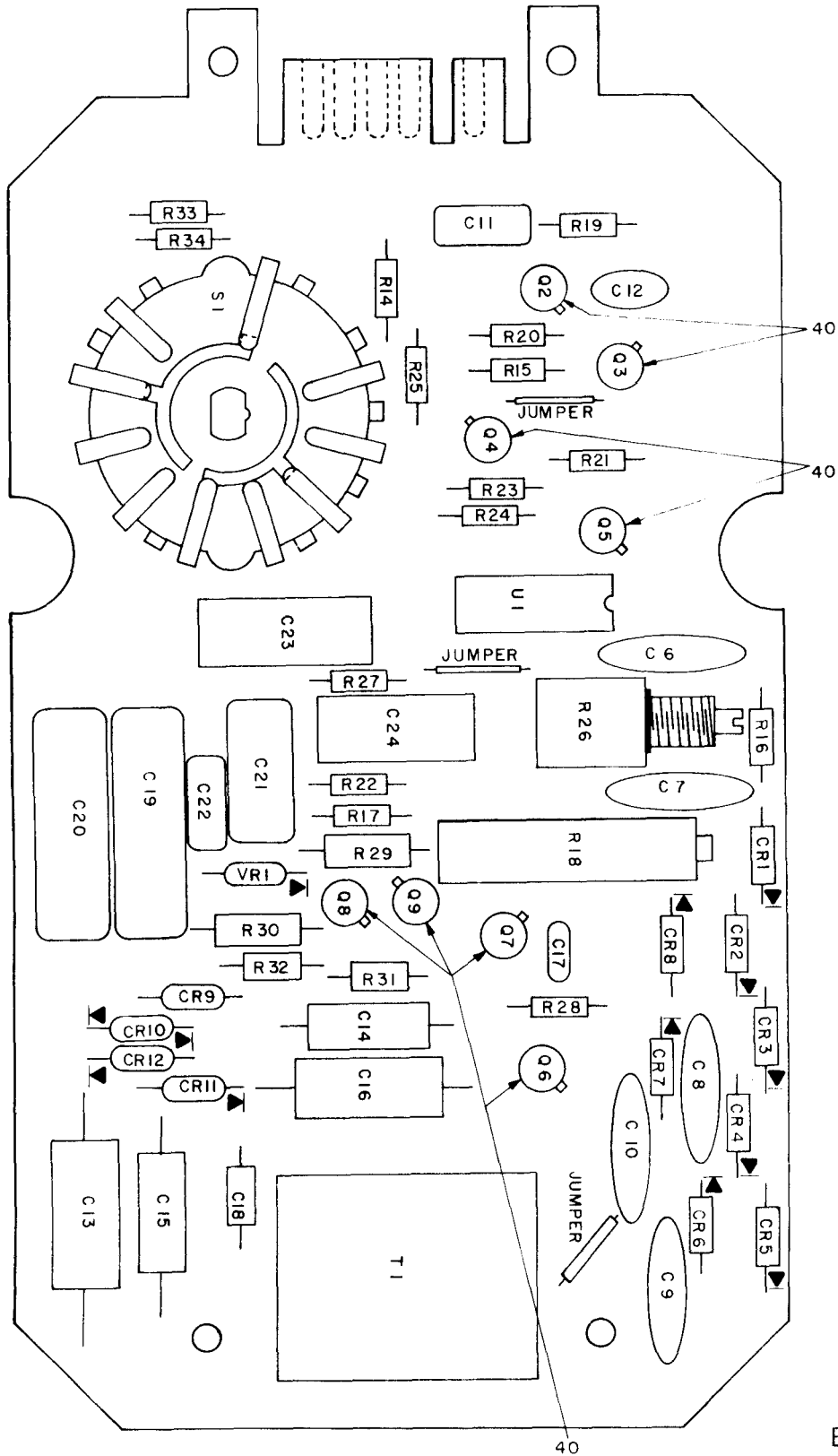


Figure 3. Printed Circuit Board Assembly (Sheet 1 of 2).

EL50L004

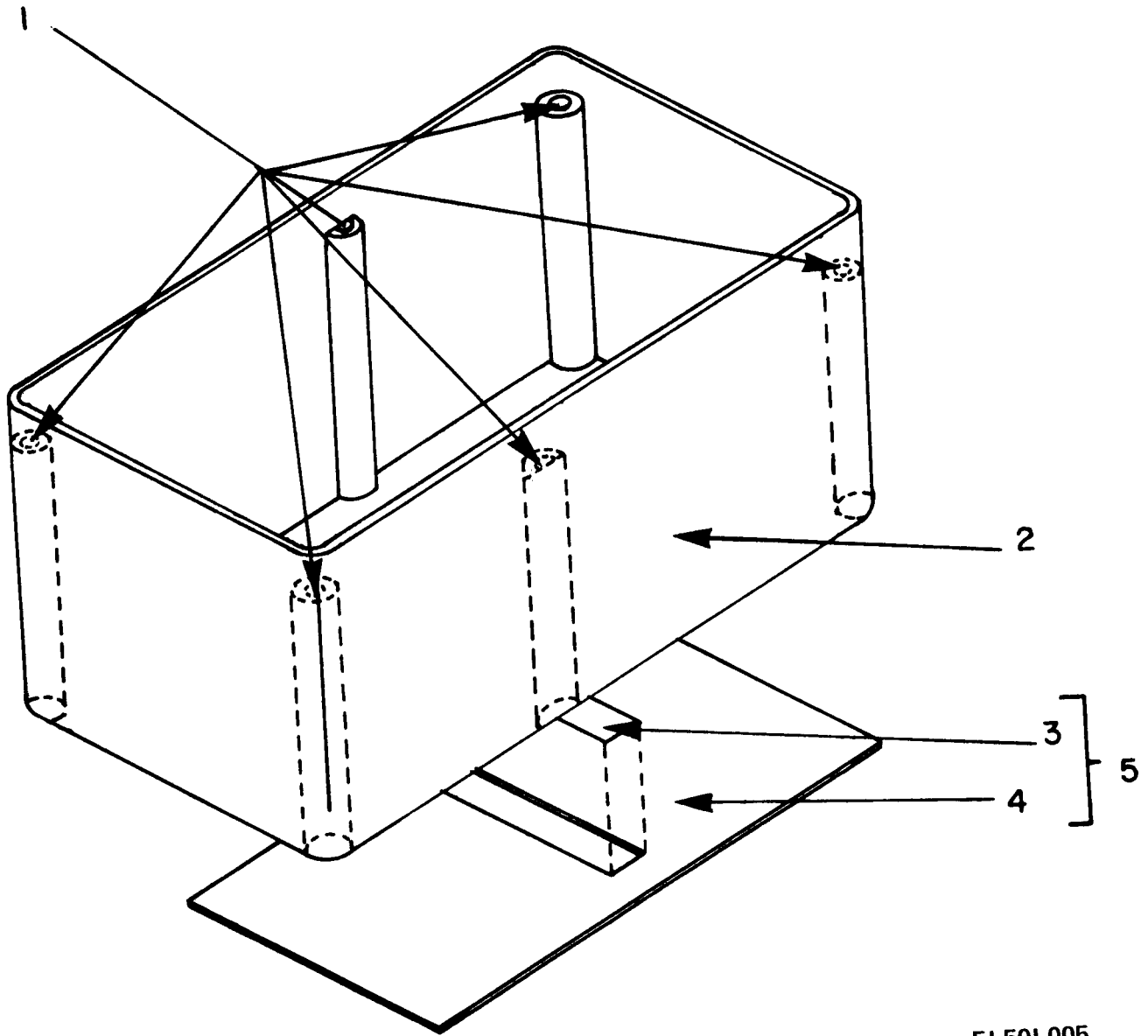
| REF. DES. | ITEM NO. | REF. DES. | ITEM NO. |
|--------------|-------------|--------------|-------------|
| C-6 | 1 | Q-3 | 17 |
| C-7 | 1 | Q-4 | 18 |
| C-8 | 1 | Q-5 | 17 |
| C-9 | 1 | Q-6 | 19 |
| C-10 | 1 | Q-7 | 17 |
| C-11 | 2 | Q-8 | 17 |
| C-12 | 3 | Q-9 | 17 |
| C-13 | 4 | R-14 | 20 |
| C-14 | 5 | R-15 | 21 |
| C-15 | 6 | R-16 | 22 |
| C-16 | 7 | R-17 | 21 |
| C-17 | 8 | R-18 | 23 |
| C-18 | 9 | R-19 | 24 |
| C-19 | 10 | R-20 | 25 |
| C-20 | 11 | R-21 | 21 |
| C-21 | 12 | R-22 | 26 |
| C-22 | 13 | R-23 | 26 |
| C-23 | 14 | R-24 | 27 |
| C-24 | 14 | R-25 | 24 |
| CR-1 | 15 | R-26 | 28 |
| CR-2 | 15 | R-27 | 29 |
| CR-3 | 15 | R-28 | 30 |
| CR-4 | 15 | R-29 | 31 |
| CR-5 | 15 | R-30 | 32 |
| CR-6 | 15 | R-31 | 33 |
| CR-7 | 15 | R-32 | 34 |
| CR-8 | 15 | R-33 | 35 |
| CR-9 | 16 | R-34 | 29 |
| CR-10 | 16 | S-1 | 36 |
| CR-11 | 16 | T-1 | 37 |
| CR-12 | 16 | U-1 | 38 |
| Q-2 | 17 | VR-1 | 39 |

EL50L009

Figure 3. Printed Circuit Board Assembly (Sheet 2 of 2).

| SECTION II (1) ITEM NO | (2) SMR CODE | (3) FSCM | TM11-6665-245-34P (4) PART NUMBER | (5) DESCRIPTION AND USABLE ON CODE (UOC) | (6) QTY |
|----------------------------------|--------------------|-------------|--|---|------------|
| GROUP 010103 P.C. BOARD ASSEMBLY | | | | | |
| FIGURE 3 | | | | | |
| 1 | PAHZZ | 04222 | HVD-6-2KV10000 A PORM 10 PCT | CAPACITOR, FIXED, CER | 5 |
| 2 | PAHZZ | 81349 | CMR05F101GODR | CAPACITOR, FIXED, MIC | 2 |
| 3 | PAHZZ | 81349 | M39014/01-1575 | CAPACITOR, FIXED, CER | 1 |
| 4 | PAHZZ | 81349 | M39003-01-2967 | CAPACITOR, FIXED, ELE | 1 |
| 5 | PAHZZ | 81349 | M39003/01-2977 | CAPACITOR, FIXED, ELE | 1 |
| 6 | PAHZZ | 81349 | M39003-01-2996 | CAPACITOR, FIXED, ELE | 1 |
| 7 | PAHZZ | 81349 | M39003/01-2994 | CAPACITOR, FIXED, ELE | 1 |
| 8 | PAHZZ | 81349 | M39014/02-1350 | CAPACITOR, FIXED, CER | 1 |
| 9 | PAHZZ | 81349 | M39003-01-3097 | CAPACITOR, FIXED, ELE | 1 |
| 10 | PAHZZ | 81349 | CQR29A1MA474G3P | CAPACITOR, FIXED, PLA | 1 |
| 11 | PAHZZ | 81349 | CQ09A1PA473F3 | CAPACITOR, FIXED, PLA | 1 |
| 12 | PAHZZ | 81349 | CMR06F472GODR | CAPACITOR, FIXED, MIC | 1 |
| 13 | PAHZZ | 81349 | CMR06F471GODR | CAPACITOR, FIXED, MIC | 1 |
| 14 | PAHZZ | 81349 | M39003-01-2970 | CAPACITOR, FIXED, ELE | 2 |
| 15 | PAHZZ | 81349 | JAN1N647 | SEMICONDUCTOR DEVIC | 8 |
| 16 | PAHZZ | 81349 | JANTX1N483B | SEMICONDUCTOR DEVIC | 4 |
| 17 | PAHZZ | 81349 | JAN2N930 | TRANSISTOR | 6 |
| 18 | PAHZZ | 81349 | JAN2N3251A | TRANSISTOR | 1 |
| 19 | PAHZZ | 81349 | JAN2N2945A | TRANSISTOR | 1 |
| 20 | PAHZZ | 81349 | RCR07G333JS | RESISTOR, FIXED, COMP | 1 |
| 21 | PAHZZ | 81349 | RCR07G223JS | RESISTOR, FIXED, COMP | 3 |
| 22 | PAHZZ | 81349 | RCR07G106JS | RESISTOR, FIXED, COMP | 1 |
| 23 | PAHZZ | 81349 | RJ12CY103 | RESISTOR, VARIABLE, N | 1 |
| 24 | PAHZZ | 16845 | 1000-483-23 | RESISTOR, FIXED | 2 |
| 25 | PAHZZ | 81349 | RCR07G104JS | RESISTOR, FIXED, COMP | 1 |
| 26 | PAHZZ | 81349 | RCR07G473JS | RESISTOR, FIXED, COMP | 2 |
| 27 | PAHZZ | 81349 | RCR07G682JS | RESISTOR, FIXED, COMP | 1 |
| 28 | PAHZZ | 81349 | RV6LAYSA253A | RESISTOR, VARIABLE, N | 1 |
| 29 | PAHZZ | 81349 | RCR07G184JS | RESISTOR, FIXED, COMP | 1 |
| 30 | PAHZZ | 81349 | RCR07G391JS | RESISTOR, FIXED, COMP | 1 |
| 31 | PAHZZ | 81349 | RNC55K7151FS | RESISTOR, FIXED, FILM | 1 |
| 32 | PAHZZ | 81349 | RNC55K5622FS | RESISTOR, FIXED, FILM | 1 |
| 33 | PAHZZ | 81349 | RNC55K2552FS | RESISTOR, FIXED, FILM | 1 |
| 34 | PAHZZ | 81349 | RNC55K6492FS | RESISTOR, FIXED, FILM | 1 |
| 35 | PAHZZ | 81349 | RCR07G272JS | RESISTOR, FIXED, COMP | 1 |
| 36 | PAHZZ | 96696 | B3907 | SWITCH, ROTARY | 1 |
| 37 | PAHZZ | 96696 | B5256 REV A | TRANSFORMER, PULSE | 1 |
| 38 | PAHZZ | 81349 | M38510/05202BCB | MICROCIRCUIT, DIGITA | 1 |
| 39 | PAHZZ | 80131 | 1N4565A | SEMICONDUCTOR DEVIC | 1 |
| 40 | PAHZZ | 07047 | 10166-N | MOUNTING PAD, ELECTR | 9 |

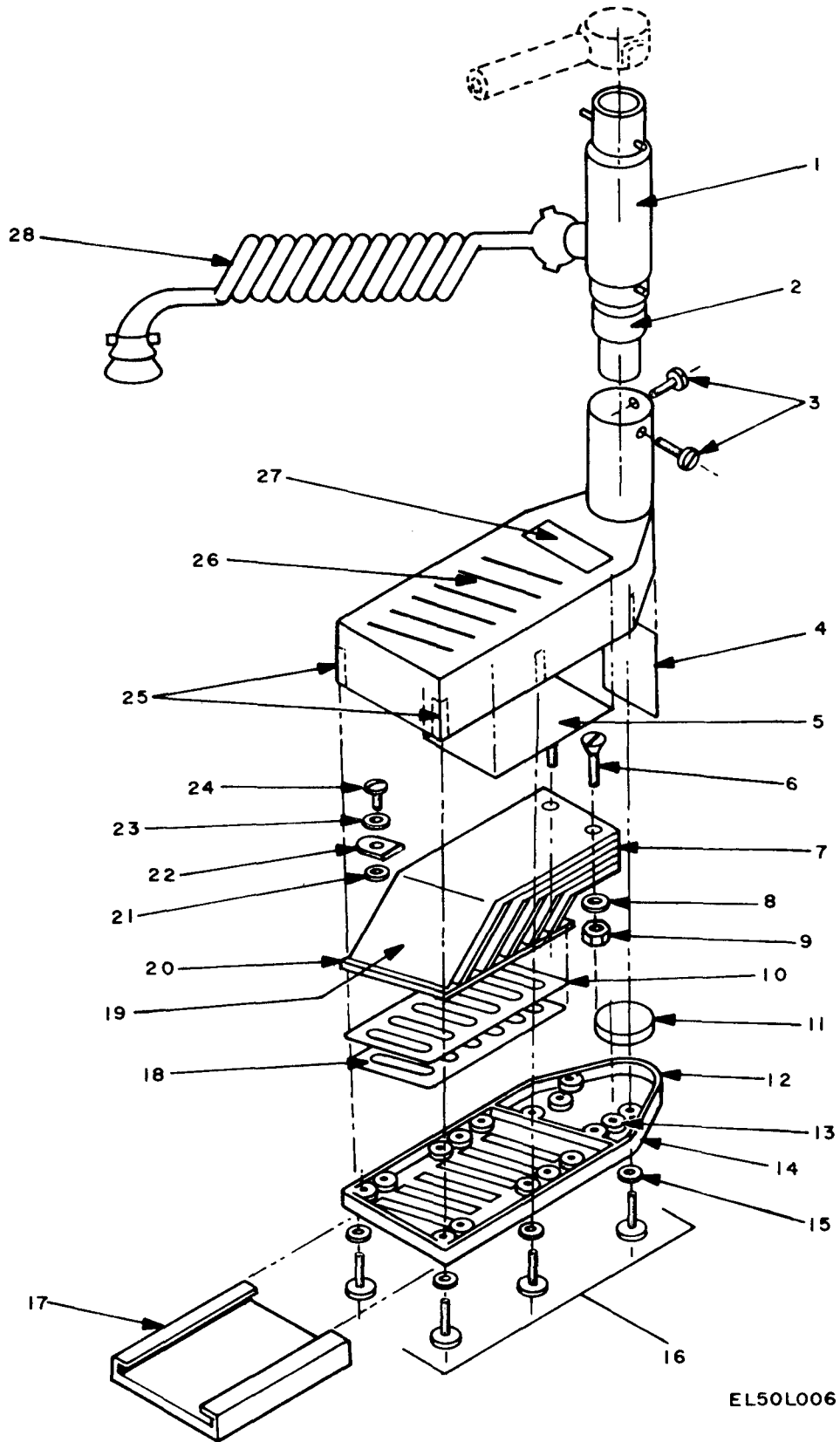
END OF FIGURE



EL50L005

Figure 4. Radiometer Case, Source.

| SECTION II | | | | TM11-6665-245-34P | | |
|------------|-------|-------|------------|--------------------------------------|-----|--|
| (1) | (2) | (3) | (4) | (5) | (6) | |
| ITEM | SMR | | PART | | | |
| NO | CODE | FSCM | NUMBER | DESCRIPTION AND USABLE ON CODE (UOC) | QTY | |
| | | | | GROUP 0102 RADIAC CASE,SOURCE | | |
| | | | | FIGURE 4 | | |
| 1 | XBHZZ | 29372 | SPA-0632-6 | SPEEDSERT | 6 | |
| 2 | XBHZZ | 96696 | D1020 | RADIACMETER CASE | 1 | |
| 3 | XBHZZ | 96696 | B1093 | ALPHA SOURCE | 1 | |
| 4 | XBHZZ | 96696 | B1094 | ALPHA SOURCE FRAME | 1 | |
| 5 | XBHHH | 96696 | B1115 | CASE SOURCE ASSY | 1 | |
| | | | | END OF FIGURE | | |

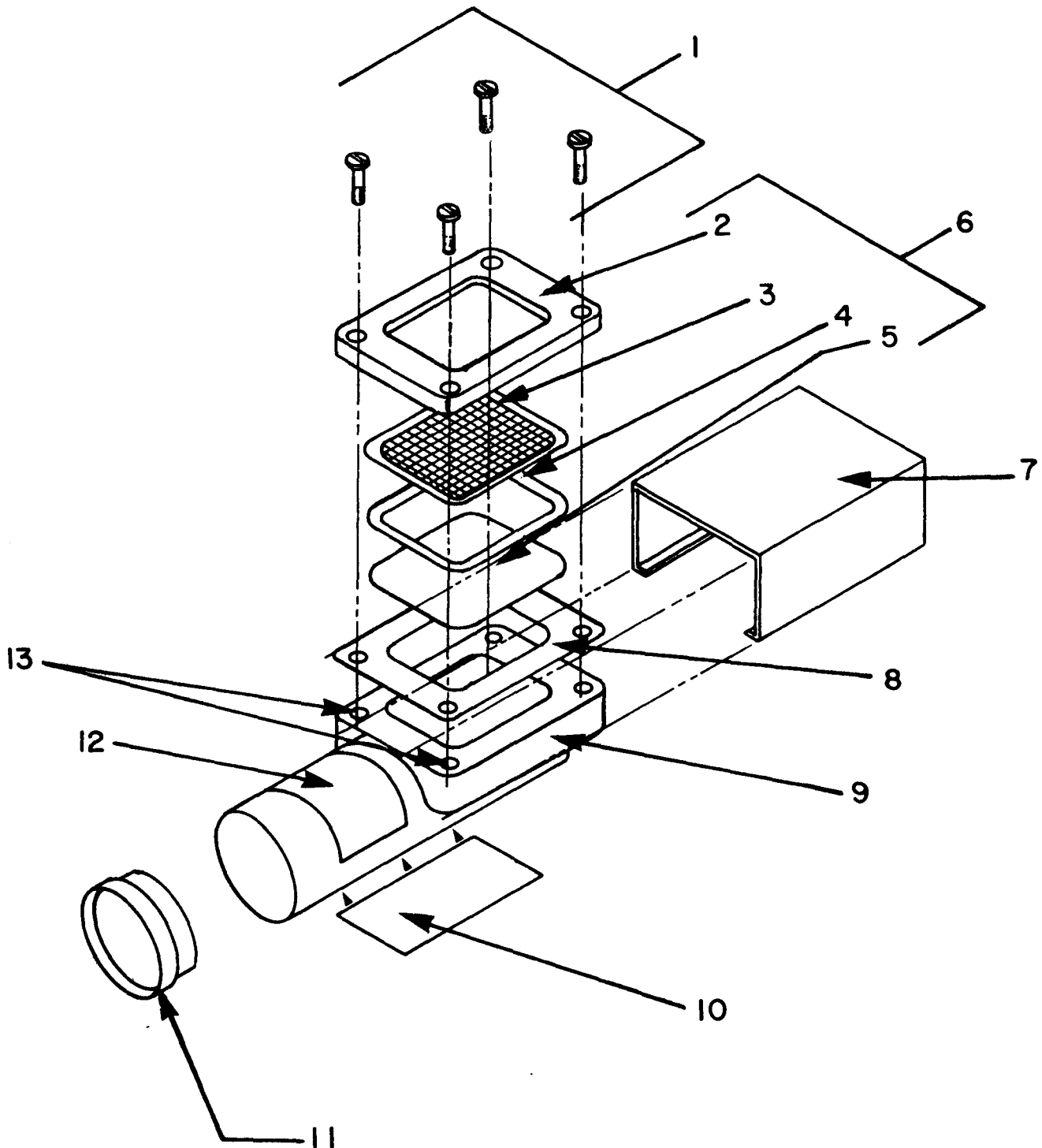


EL50L006

Figure 5. Main Probe Assembly.

| SECTION II (1) | (2) | (3) | TM11-6665-245-34P (4) | (5) | (6) |
|---|-------------|-------|--------------------------|--------------------------------------|-----|
| ITEM NO | SMR CODE | FSCM | PART NUMBER | DESCRIPTION AND USABLE ON CODE (UOC) | QTY |
| GROUP 02 MAIN PROBE ASSEMBLY (INCLUDES EMITTER FOLLOWER) | | | | | |
| FIGURE 5 | | | | | |
| 1 | PAHZZ | 96696 | C4622 | EMITTER FOLLOWER | 1 |
| 2 | PAHZZ | 49671 | 931B | ELECTRON TUBE | 1 |
| 3 | PAHZZ | 96906 | MS35223-13 | SCREW,MACHINE | 2 |
| 4 | XBHZZ | 96696 | B1095 | SHIELD,LEAD | 1 |
| 5 | XBHZZ | 96696 | B1055 | LT PIPE CUSHION | 1 |
| 6 | PAHZZ | 96906 | MS35198-33 | SCREW,MACHINE | 2 |
| 7 | XAHZZ | 96696 | B1041 | LIGHT PIPE | 1 |
| 8 | PAHZZ | 96696 | B1051 | SPACER,SLEEVE | 2 |
| 9 | XBHZZ | 06540 | 9317-A140-1 | SPACER | 2 |
| 10 | XBHZZ | 96696 | B1048 | WINDOW,OBSERVATION | 1 |
| 11 | XBHZZ | 96696 | B1054 | PM TUBE CUSHION | 1 |
| 12 | XBHZZ | 25184 | 168-7507 | O%RING | 1 |
| 13 | XBOZZ | 29372 | SPA-0440-S | INSERT,SCREW THREAD | 2 |
| 14 | XBOZZ | 96696 | D1024 | PROBE BASE | 1 |
| 15 | PAHZZ | 83330 | 2670 | INSULATOR,WASHER | 6 |
| 16 | PAHZZ | 96696 | B1088-1 | SCREW,CAPTIVE | 6 |
| 17 | PAOZZ | 96696 | B1050 REV C | WINDOW GUARD PLASTI | 1 |
| 18 | PAHZZ | 96696 | B1044 | SEAL,RUBBER STRIP | 1 |
| 19 | PAHZZ | 96696 | B1049 | TEST SET SUBASSEMBL | 1 |
| 20 | XBHZZ | 96696 | B1043 | SCREEN,LIGHT PIPE,R | 1 |
| 21 | PAHZZ | 83330 | 2161 | WASHER,FLAT | 5 |
| 22 | PAHZZ | 96696 | B1080 | ANCHOR STRAP | 6 |
| 23 | PAHZZ | 96906 | MS35338-97 | WASHER,LOCK | 6 |
| 24 | PAHZZ | 96906 | MS35206-215 | SCREW,MACHINE | 6 |
| 25 | PAHZZ | 29372 | SPA0632S | INSERT,SCREW THREAD | 6 |
| 26 | XBOZZ | 96696 | C4181 | PROBE HOUSING | 1 |
| 27 | XBHZZ | 96696 | A3903 | PLATE,IDENT | 1 |
| 28 | PAOZZ | 96696 | B4623 | COIL CORD ASSEMBLY | 1 |

END OF FIGURE



EL50L007

Figure 6. Auxiliary Probe Assembly.

| SECTION II | | | | TM11-6665-245-34P | |
|-----------------------------------|----------|-------|-------------|--------------------------------------|-----|
| (1) | (2) | (3) | (4) | (5) | (6) |
| ITEM NO | SMR CODE | FSCM | PART NUMBER | DESCRIPTION AND USABLE ON CODE (UOC) | QTY |
| GROUP 03 AUXILIARY PROBE ASSEMBLY | | | | | |
| FIGURE 6 | | | | | |
| 1 | PAHZZ | 96906 | MS35265-28 | SCREW,MACHINE | 4 |
| 2 | XBHZZ | 96696 | B1065 | COVER,SCREEN | 1 |
| 3 | XBHZZ | 96696 | B1097 | PROTECT SCRN BE-CU | 1 |
| 4 | PAHZZ | 96696 | B1099 | GASKET | 1 |
| 5 | XBHZZ | 96696 | B1116 REV B | SCIN SCREEN ASSY | 1 |
| 6 | XBHZZ | 96696 | B1146 | SCINTILLATION SCREE | 1 |
| 7 | PAOZZ | 96696 | A3420 REV C | PROBE COVER | 1 |
| 8 | PAHZZ | 96696 | B1098 REV D | GASKET | 1 |
| 9 | XBHZZ | 96696 | C4178 REV H | PROBE CHAMBER | 1 |
| 10 | XBHZZ | 96696 | A3991 REV B | NAMEPLATE AUXPROBE | 1 |
| 11 | PAOZZ | 99017 | EC15 | CAP-PLUG,PROTECTIVE | 1 |
| 12 | XBHZZ | 96696 | A3998 REV A | CAUTION LABEL | 1 |
| 13 | XBHZZ | 29372 | 5PA-0632 | SPEEDCERT | 4 |

END OF FIGURE

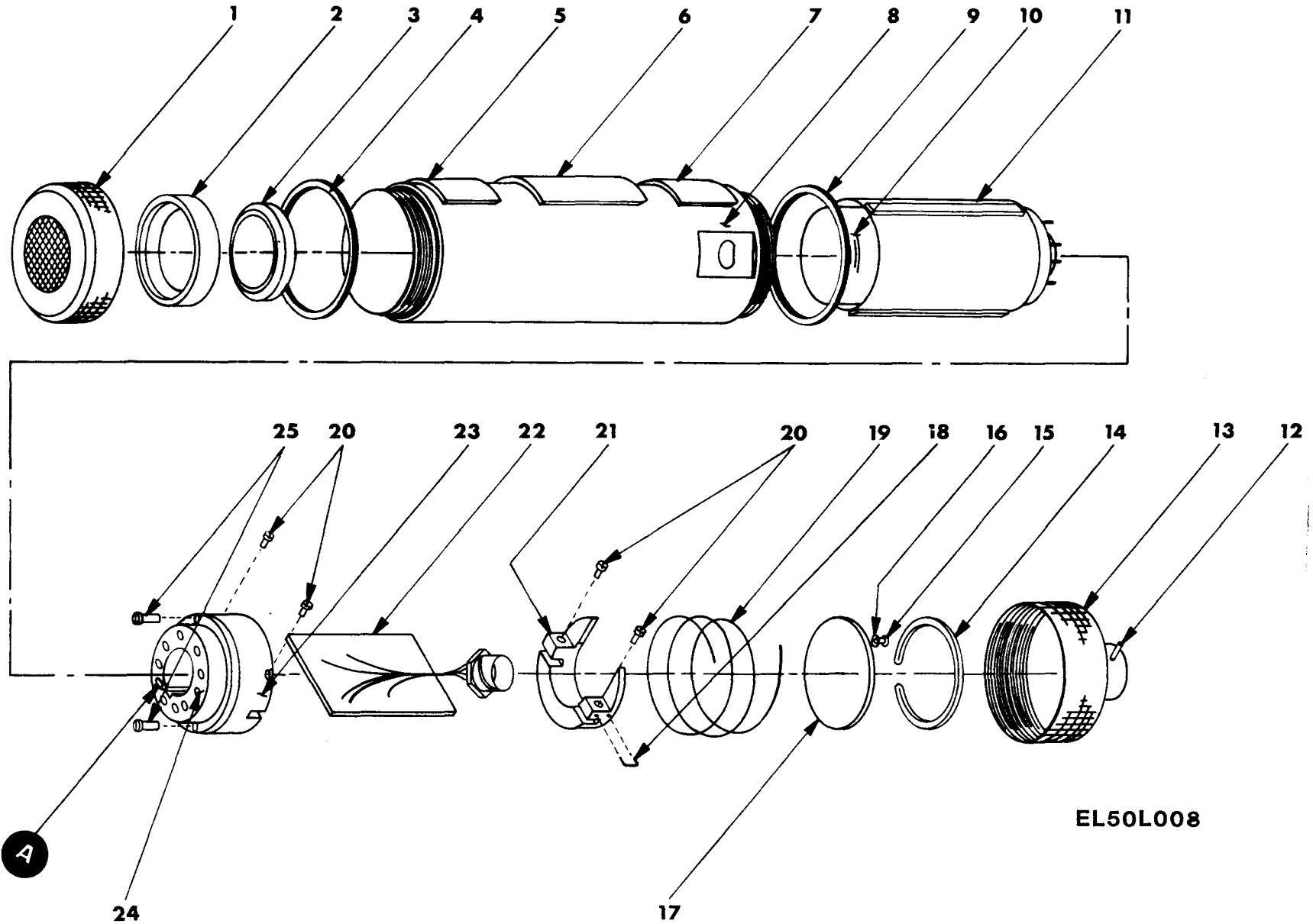
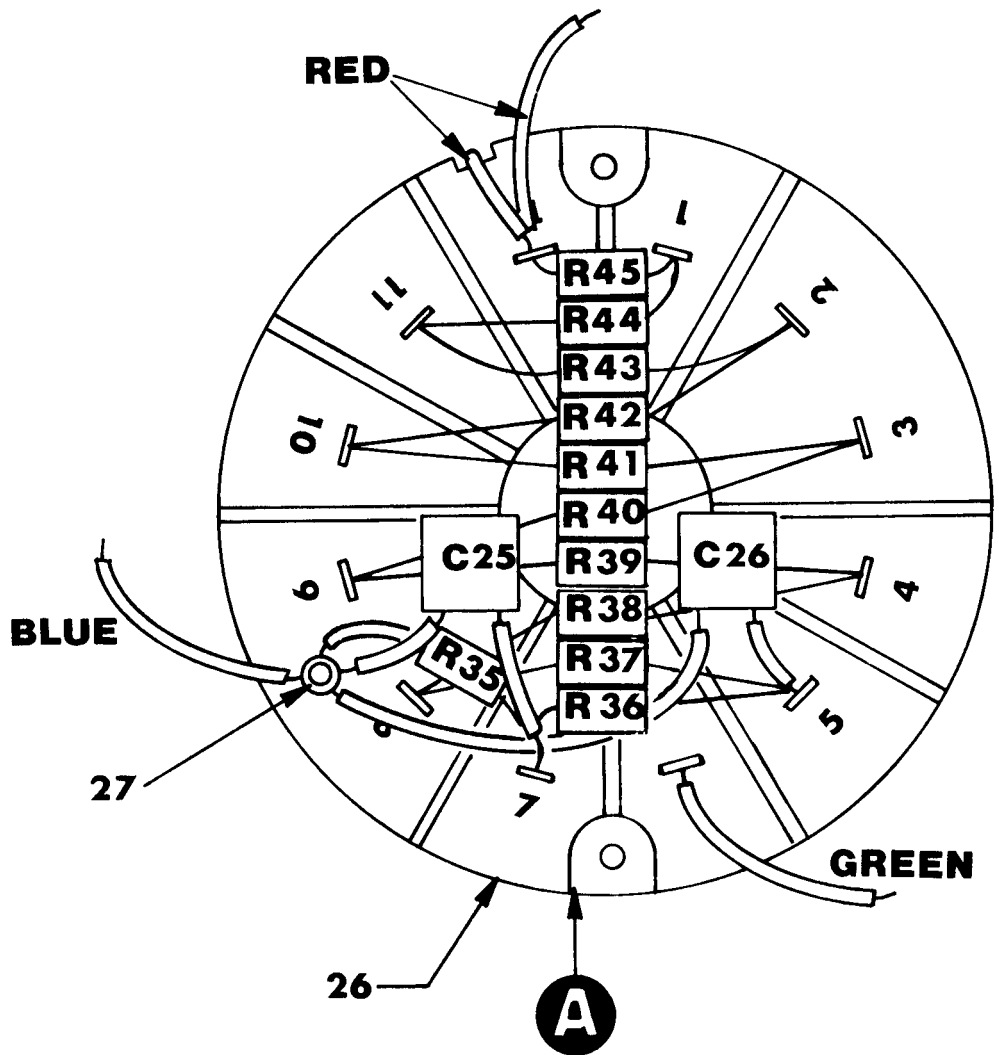


Figure 7. X-Ray Probe, Exploded View (Sheet 1 of 2 Sheets)

| REF. DESIG. | ITEM N°. |
|-------------|----------|
| C25 | 28 |
| C26 | 28 |
| R35 | 29 |
| R36 | 29 |
| R37 | 29 |
| R38 | 29 |
| R39 | 29 |
| R40 | 29 |
| R41 | 29 |
| R42 | 29 |
| R43 | 29 |
| R44 | 29 |
| R45 | 30 |



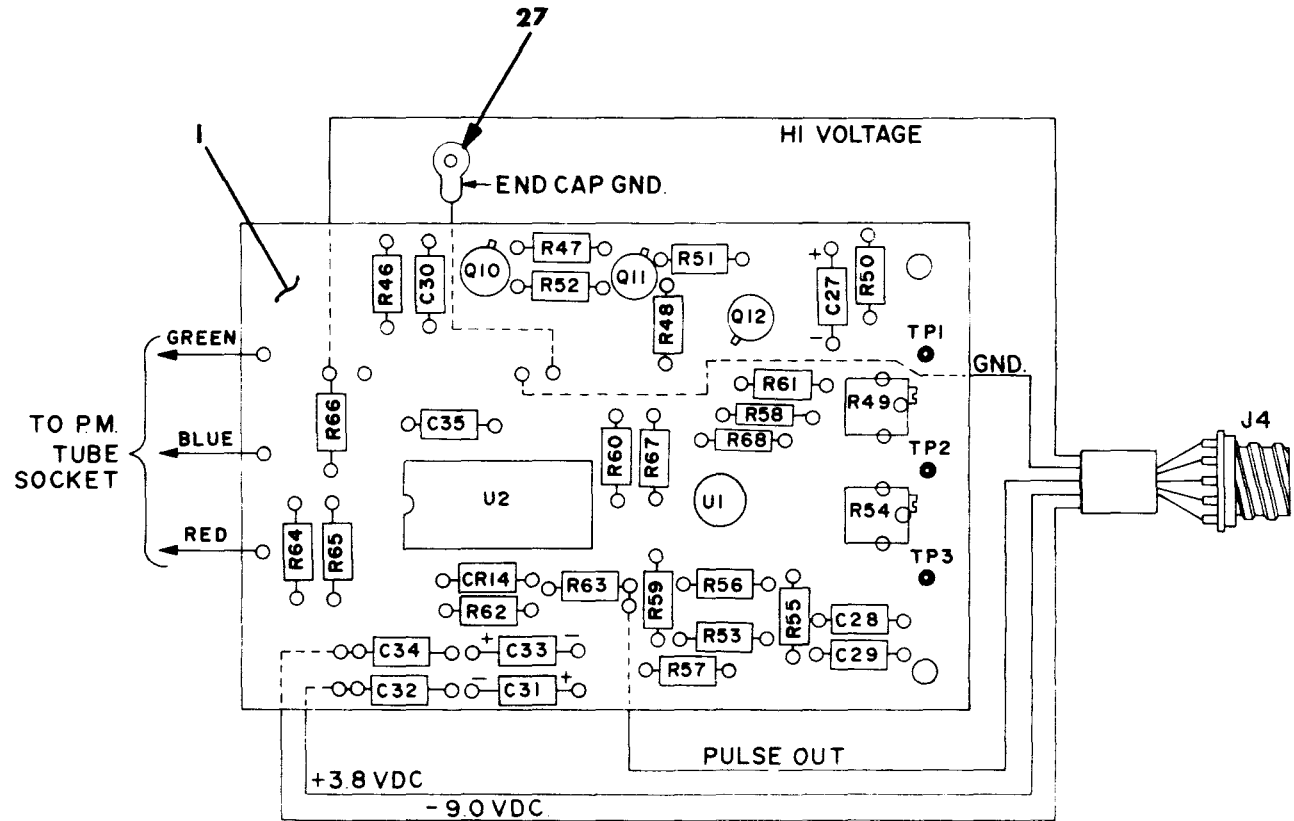
EL50L009

Figure 7. X-Ray Probe, Exploded View (Sheet 2 of 2 Sheets)

| SECTION II | | TM11-6665-245-34P | | | |
|-------------------------------|----------|-------------------|----------------|--------------------------------------|-----|
| (1) | (2) | (3) | (4) | (5) | (6) |
| ITEM NO | SMR CODE | FSCM | PART NUMBER | DESCRIPTION AND USABLE ON CODE (UOC) | QTY |
| GROUP 04 X-RAY PROBE ASSEMBLY | | | | | |
| FIGURE 7 | | | | | |
| 1 | XBDZZ | 96696 | C-7357 | CAP RING ASSY | 1 |
| 2 | XBDZZ | 96696 | A-4370 | JAMB RING | 1 |
| 3 | XBDZZ | 96696 | A-5475 | SCINT CRYSTAL HOLD ASSY | 1 |
| 4 | PADZZ | 02697 | 2-33C557-7 | PACKING, PREFORMED | 1 |
| 5 | XBDZZ | 96696 | B-7354 | ID PLATE DT590A | 1 |
| 6 | XBDZZ | 96696 | B-7365 | RELATION CHT-PLATE | 1 |
| 7 | XBDZZ | 96696 | B8658 | CALIBRATION TAG | 1 |
| 8 | XBDZZ | 96696 | C-7206 | PROBE HOUSING | 1 |
| 9 | PADZZ | 45681 | 2-031-C557-70 | PACKING, PREFORMED | 1 |
| 10 | PADZZ | 54590 | S83010E | PHOTOMULTIPLIER TUBE | 1 |
| 11 | XBDZZ | 96696 | B-4373 | TUBE SUPPORT ASSY | 1 |
| 12 | XBDZZ | 96696 | B-1074 | PIN | 1 |
| 13 | PADZZ | 96696 | B-7207 | CAP, ELECTRICAL | 1 |
| 14 | PADZZ | 79136 | 5008-187-H | RING, RETAINING | 1 |
| 15 | PADZZ | 96906 | MS51957-1 | SCREW, MACHINE | 1 |
| 16 | PADZZ | 96906 | MS35333-69 | WASHER, LOCK | 1 |
| 17 | XBDZZ | 96696 | A-7208 | SPRING RETAINER | 1 |
| 18 | PADZZ | 96696 | A-7344 | STAPLE GUIDE | 1 |
| 19 | XBDZZ | 56988 | S-3064 | SPRING | 1 |
| 20 | PADZZ | 96696 | 315159 | SCREW CAP, SOCKET HE | 4 |
| 21 | XBDZZ | 96696 | B-7337 | SUPPORT, PC BOARD | 1 |
| 23 | XBDZZ | 96696 | B-7342 | TUBE SOCKET CLAMP | 1 |
| 24 | PADZZ | 96696 | C-7339 | SOCKET ASSEMBLY | 1 |
| 25 | PADZZ | 96696 | 311676 | SCREW | 2 |
| 26 | XBDZZ | 96696 | 600819 | SOCKET, TUBE | 1 |
| 27 | PADZZ | 6K774 | 5714153020519 | STANDOFF PIN | 1 |
| 28 | PADZZ | 81349 | M39014-02-1338 | CAPACITOR, FIXED, CER | 2 |
| 29 | PADZZ | 81349 | RCR07G755J | RESISTOR, COMP | 10 |
| 30 | PADZZ | 81349 | RCR07G106JS | RESISTOR, FIXED, COMP | 1 |

END OF FIGURE

| REF DESIG. | ITEM NO. | REF DESIG. | ITEM NO. |
|------------|----------|------------|----------|
| C-27 | 5 | R-54 | 22 |
| C-28 | 2 | R-55 | 11 |
| C-29 | 2 | R-56 | 17 |
| C-30 | 3 | R-57 | 11 |
| C-31 | 5 | R-58 | 13 |
| C-32 | 2 | R-59 | 11 |
| C-33 | 5 | R-60 | 18 |
| C-34 | 2 | R-61 | 15 |
| C-35 | 4 | R-62 | 14 |
| CR-14 | 6 | R-63 | 10 |
| Q-10 | 8 | R-64 | 19 |
| Q-11 | 8 | R-65 | 20 |
| Q-12 | 7 | R-66 | 20 |
| R-46 | 16 | R-67 | 11 |
| R-47 | 14 | R-68 | 11 |
| R-48 | 9 | U-1 | 23 |
| R-49 | 21 | U-2 | 24 |
| R-50 | 12 | J-4 | 25 |
| R-51 | 11 | TP-1 | 26 |
| R-52 | 11 | TP-2 | 26 |
| R-53 | 11 | TP-3 | 26 |



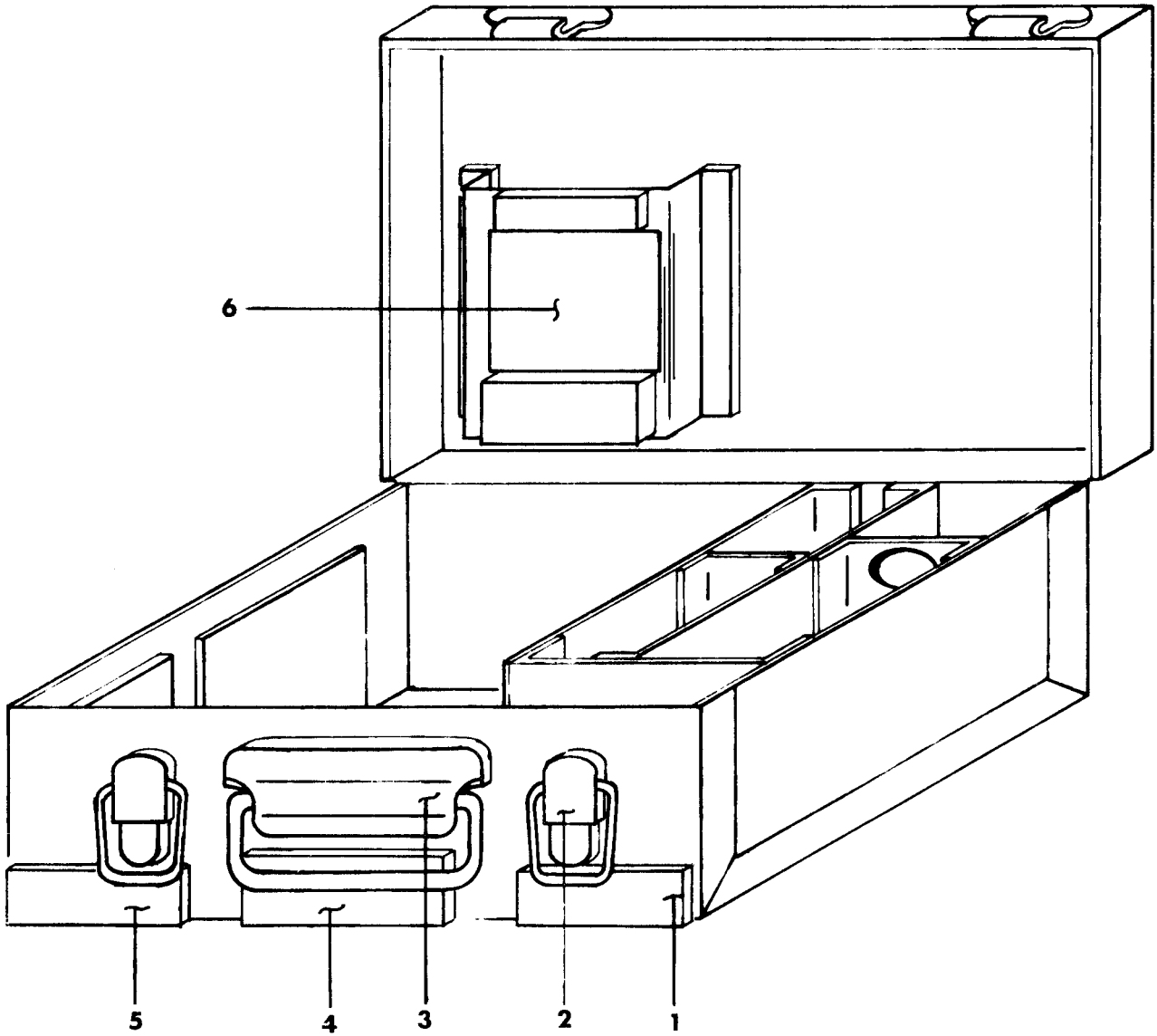
TM11-6665-245-34P

EL50L010

Figure 8. X-Ray Probe, DT-590A/PDR-56,PCB Parts Location

| SECTION II (1) | ITEM (2) | (3) | TM11-6665-245-34P (4) | (5) | (6) |
|-------------------------|-------------|-------|--------------------------|--------------------------------------|-----|
| NO | SMR CODE | FSCM | PART NUMBER | DESCRIPTION AND USABLE ON CODE (UOC) | QTY |
| GROUP 0401 PCB ASSEMBLY | | | | | |
| FIGURE 8 | | | | | |
| 1 | XBDZZ | 96696 | B-7341 | PC BOARD | 1 |
| 2 | PADZZ | 81349 | M39014/01-1575 | CAPACITOR, FIXED, CER | 4 |
| 3 | PADZZ | 81349 | M39014/01-1321 | CAPACITOR, FIXED, CER | 1 |
| 4 | PADZZ | 81349 | CMR05F101GODR | CAPACITOR, FIXED, MIC | 1 |
| 5 | PADZZ | 81349 | M39003-01-3097 | CAPACITOR, FIXED, ELE | 3 |
| 6 | PADZZ | 81349 | JAN1N914 | SEMICONDUCTOR DEVIC | 1 |
| 7 | PADZZ | 81349 | JAN2N930 | TRANSISTOR | 1 |
| 8 | PADZZ | 81349 | JAN2N3251A | TRANSISTOR | 2 |
| 9 | PADZZ | 81349 | RCR05G221JS | RESISTOR, FIXED, COMP | 1 |
| 10 | PADZZ | 81349 | RCR05G102JS | RESISTOR, FIXED, COMP | 1 |
| 11 | PADZZ | 81349 | RCR05G103JS | RESISTOR, FIXED, COMP | 8 |
| 12 | PADZZ | 81349 | RCR05G333JS | RESISTOR, FIXED, COMP | 1 |
| 13 | PADZZ | 81349 | RCR05G273JS | RESISTOR, FIXED, COMP | 1 |
| 14 | PADZZ | 81349 | RCR05G333JS | RESISTOR, FIXED, COMP | 2 |
| 15 | PADZZ | 81349 | RCR05G753JS | RESISTOR, FIXED, COMP | 1 |
| 16 | PADZZ | 81349 | RCR05G104JS | RESISTOR, FIXED, COMP | 1 |
| 17 | PADZZ | 81349 | RCR05G224JS | RESISTOR, FIXED, COMP | 1 |
| 18 | PADZZ | 81349 | RCR07G305JS | RESISTOR, FIXED, COMP | 1 |
| 19 | PADZZ | 81349 | RCR07G106JS | RESISTOR, FIXED, COMP | 1 |
| 20 | PADZZ | 81349 | RCR07G226JS | RESISTOR, FIXED, COMP | 2 |
| 21 | PADZZ | 81349 | RJR26FP103P | RESISTOR, VARIABLE, N | 1 |
| 22 | PADDD | 96696 | C-7340 | CIRCUIT CARD ASSEMB | 1 |
| 22 | PADZZ | 81349 | RJR26FP104P | RESISTOR, VARIABLE, N | 1 |
| 23 | PADZZ | 81349 | M38510/11202BCB | MICROCIRCUIT, DIGITA | 1 |
| 24 | PADZZ | 18324 | C5474N/883 | MICROCIRCUIT, DIGITA | 1 |
| 25 | PADZZ | 71468 | MC-14E-10-6PN | CONNECTOR, RECEPTA | 1 |
| 26 | XBDZZ | 89110 | 85931-6 | TEST POINT | 3 |
| 27 | PADZZ | 96906 | MS77068-1 | TERMINAL, LUG | 1 |

END OF FIGURE



EL50L011

Figure 9. Case Radiac Set

| SECTION II | | | | TM11-6665-245-34P | |
|------------|----------|-------|-------------|--------------------------------------|-----|
| (1) | (2) | (3) | (4) | (5) | (6) |
| ITEM NO | SMR CODE | FSCM | PART NUMBER | DESCRIPTION AND USABLE ON CODE (UOC) | QTY |
| | | | | GROUP 05 CASE,RADIAC SET D4609 | |
| | | | | FIGURE 9 | |
| 1 | XBHZZ | 96696 | B5308 | PLATE,IDENT | 1 |
| 2 | XBHZZ | 29943 | C224-W/#200 | DRAW PULL CATCH | 1 |
| 3 | XBHZZ | 29943 | 985LS-2-RG | HANDLE | 1 |
| 4 | XBHZZ | 96696 | B1147 | RADIATION LABEL | 1 |
| 5 | XBHZZ | 96696 | B4629 | PLATE,IDENT | 1 |
| 6 | XBHZZ | 96696 | B4627 | LISTING,CONTENTS | 1 |
| | | | | END OF FIGURE | |

NATIONAL STOCK NUMBER AND PART NUMBER INDEX

| NATIONAL STOCK NUMBER INDEX | | NATIONAL STOCK NUMBER INDEX | | | |
|-----------------------------|------|-----------------------------|------------------|------|------|
| STOCK NUMBER | FIG. | ITEM | STOCK NUMBER | FIG. | ITEM |
| 5905-00-004-6122 | 3 | 31 | 5905-00-432-6385 | 3 | 32 |
| 5310-00-009-7662 | 5 | 21 | 5905-00-458-9346 | 8 | 16 |
| 5910-00-010-8158 | 3 | 4 | 5905-00-458-9500 | 8 | 10 |
| 5910-00-010-8192 | 3 | 9 | 5905-00-483-4284 | 3 | 23 |
| | 8 | 5 | 5310-00-484-4439 | 2 | 26 |
| 5910-00-010-8718 | 7 | 28 | 6240-00-542-6571 | 2 | 54 |
| 5305-00-054-5635 | 7 | 15 | 5310-00-543-4652 | 7 | 16 |
| 5305-00-059-8382 | 2 | 15 | 5905-00-549-8222 | 3 | 28 |
| 5340-00-063-5446 | 6 | 11 | 5330-00-579-8108 | 2 | 47 |
| 5905-00-110-0388 | 3 | 25 | 5305-00-582-5807 | 6 | 1 |
| 5905-00-110-7622 | 3 | 27 | 5310-00-595-6211 | 2 | 50 |
| 5905-00-111-4727 | 3 | 35 | 5310-00-616-3555 | 2 | 31 |
| 5910-00-112-4337 | 8 | 3 | | 2 | 34 |
| 5910-00-113-5499 | 3 | 8 | 5935-00-617-2078 | 8 | 25 |
| 5910-00-114-0787 | 3 | 6 | 5905-00-617-5090 | 8 | 12 |
| 5905-00-114-5344 | 3 | 29 | | 8 | 14 |
| 5905-00-116-8556 | 3 | 21 | 5965-00-651-7372 | 1 | 4 |
| 5905-00-118-4559 | 3 | 20 | 5935-00-681-5789 | 2 | 44 |
| 5961-00-121-9865 | 3 | 19 | 5940-00-682-2477 | 8 | 27 |
| 5905-00-121-9919 | 3 | 22 | 5305-00-719-5329 | 2 | 1 |
| | 7 | 30 | 5305-00-719-5338 | 2 | 2 |
| | 8 | 19 | 5330-00-727-9486 | 2 | 11 |
| 5905-00-121-9921 | 8 | 18 | 5930-00-755-6806 | 2 | 9 |
| 5905-00-121-9932 | 3 | 30 | 5961-00-842-9864 | 8 | 6 |
| 5910-00-124-0659 | 3 | 3 | 5935-00-885-2264 | 2 | 14 |
| | 8 | 2 | 5305-00-889-2997 | 5 | 24 |
| 5905-00-126-6703 | 8 | 20 | 5305-00-889-2999 | 2 | 38 |
| 5961-00-131-1316 | 3 | 39 | 5961-00-911-6015 | 3 | 18 |
| 5905-00-137-7226 | 3 | 33 | | 8 | 8 |
| 5905-00-141-0717 | 3 | 26 | 5340-00-917-0928 | 5 | 25 |
| 5905-00-147-7287 | 3 | 34 | 5310-00-934-9739 | 2 | 52 |
| 5970-00-153-0155 | 5 | 15 | 5310-00-934-9761 | 2 | 33 |
| 5910-00-156-7293 | 3 | 7 | 5310-00-939-1061 | 2 | 24 |
| 5905-00-177-7486 | 8 | 9 | 5930-00-950-4541 | 2 | 10 |
| 5310-00-184-8996 | 5 | 23 | 5305-00-954-5634 | 5 | 6 |
| 5910-00-189-2818 | 3 | 14 | 5310-00-973-8660 | 2 | 13 |
| 5910-00-189-4248 | 3 | 5 | 5961-00-985-4900 | 3 | 15 |
| 5365-00-205-4208 | 2 | 36 | 5305-00-993-0190 | 2 | 55 |
| 5305-00-206-2508 | 2 | 12 | 6625-01-010-0734 | 5 | 19 |
| | 2 | 32 | 6665-01-013-2920 | 2 | 3 |
| 5305-00-206-2510 | 2 | 19 | 5910-01-022-8983 | 3 | 11 |
| | 2 | 25 | 5962-01-025-2594 | 3 | 38 |
| 5310-00-213-4960 | 2 | 56 | 5910-01-029-8907 | 3 | 13 |
| 5961-00-226-8579 | 3 | 17 | 5910-01-030-9211 | 3 | 12 |
| | 8 | 7 | 5905-01-035-5065 | 8 | 11 |
| 5961-00-235-8678 | 3 | 16 | 5930-01-037-5504 | 3 | 36 |
| 5305-00-405-8960 | 5 | 3 | 5910-01-043-6892 | 3 | 2 |
| 5905-00-407-0084 | 8 | 13 | | 8 | 4 |
| 5905-00-407-0089 | 8 | 15 | 5910-01-044-2688 | 3 | 10 |
| 5905-00-412-4044 | 8 | 17 | 5905-01-066-3755 | 8 | 21 |

NATIONAL STOCK NUMBER AND PART NUMBER INDEX

| STOCK NUMBER | NATIONAL STOCK NUMBER INDEX | | FIG. | ITEM |
|------------------|-----------------------------|------|------|------|
| | FIG. | ITEM | | |
| 5905-01-082-6824 | 8 | 22 | | |
| 5960-01-085-3514 | 5 | 2 | | |
| 5365-01-087-0833 | 3 | 40 | | |
| 5360-01-101-6696 | 2 | 8 | | |
| 5340-01-101-6697 | 5 | 22 | | |
| 5330-01-101-6748 | 6 | 4 | | |
| 5330-01-101-6749 | 6 | 8 | | |
| 5365-01-101-6755 | 2 | 27 | | |
| 5365-01-101-6756 | 5 | 8 | | |
| 3040-01-101-6767 | 2 | 40 | | |
| 5999-01-101-6805 | 2 | 30 | | |
| 6625-01-101-6809 | 2 | 20 | | |
| 6665-01-103-7684 | 1 | 7 | | |
| 6665-01-103-7685 | 6 | 7 | | |
| 6665-01-103-7686 | 5 | 28 | | |
| 6665-01-103-7687 | 5 | 17 | | |
| 6665-01-103-7688 | 5 | 1 | | |
| 5950-01-103-7759 | 3 | 37 | | |
| 6665-01-103-7761 | 1 | 3 | | |
| 6135-01-104-7885 | 2 | 7 | | |
| 6665-01-118-7352 | 1 | 1 | | |
| 5365-01-121-5405 | 2 | 22 | | |
| 5905-01-149-5107 | 3 | 24 | | |
| 6665-01-151-4082 | 1 | 6 | | |
| 6665-01-181-2478 | 7 | 22 | | |
| 5999-01-204-0246 | 7 | 13 | | |
| 5935-01-204-6024 | 7 | 24 | | |

NATIONAL STOCK NUMBER AND PART NUMBER INDEX

| FSCM | | PART NUMBER INDEX PART NUMBER | FIG. | ITEM |
|-------|-------------|----------------------------------|------|------|
| 96696 | A-4370 | | 7 | 2 |
| 96696 | A-5475 | | 7 | 3 |
| 96696 | A-7208 | | 7 | 17 |
| 96696 | A-7344 | | 7 | 18 |
| 96696 | A3366 REV A | | 2 | 53 |
| 96696 | A3367 REV A | | 2 | 51 |
| 96696 | A3369 | 5365-01-121-5405 | 2 | 22 |
| 96696 | A3391 REV D | | 1 | 5 |
| 96696 | A3401 REV A | 5360-01-101-6696 | 2 | 8 |
| 96696 | A3420 REV C | 6665-01-103-7685 | 6 | 7 |
| 96696 | A3856 REV A | 5365-01-101-6755 | 2 | 27 |
| 96696 | A3903 | | 5 | 27 |
| 96696 | A3911 | | 2 | 35 |
| 96696 | A3991 REV B | | 6 | 10 |
| 96696 | A3998 REV A | | 6 | 12 |
| 96696 | B-1074 | | 7 | 12 |
| 96696 | B-4373 | | 7 | 11 |
| 96696 | B-7207 | 5999-01-204-0246 | 7 | 13 |
| 96696 | B-7337 | | 7 | 21 |
| 96696 | B-7341 | | 8 | 1 |
| 96696 | B-7342 | | 7 | 23 |
| 96696 | B-7354 | | 7 | 5 |
| 96696 | B-7365 | | 7 | 6 |
| 96696 | B1018 REV C | 3040-01-101-6767 | 2 | 40 |
| 96696 | B1023 REV G | | 2 | 39 |
| 96696 | B1031 REV B | 6665-01-103-7684 | 1 | 7 |
| 96696 | B1041 | | 5 | 7 |
| 96696 | B1042 REV D | | 2 | 17 |
| 96696 | B1043 | | 5 | 20 |
| 96696 | B1044 | | 5 | 18 |
| 96696 | B1048 | | 5 | 10 |
| 96696 | B1049 | 6625-01-010-0734 | 5 | 19 |
| 96696 | B1050 REV C | 6665-01-103-7687 | 5 | 17 |
| 96696 | B1051 | 5365-01-101-6756 | 5 | 8 |
| 96696 | B1054 | | 5 | 11 |
| 96696 | B1055 | | 5 | 5 |
| 96696 | B1065 | | 6 | 2 |
| 96696 | B1079 | 6665-01-013-2920 | 2 | 3 |
| 96696 | B1080 | 5340-01-101-6697 | 5 | 22 |
| 96696 | B1081 | | 2 | 48 |
| 96696 | B1082 REV E | | 2 | 49 |
| 96696 | B1088-1 | | 2 | 46 |
| | | | 5 | 16 |
| 96696 | B1088-2 | | 2 | 5 |
| 96696 | B1093 | | 4 | 3 |
| 96696 | B1094 | | 4 | 4 |
| 96696 | B1095 | | 5 | 4 |
| 96696 | B1097 | | 6 | 3 |
| 96696 | B1098 REV D | 5330-01-101-6749 | 6 | 8 |
| 96696 | B1099 | 5330-01-101-6748 | 6 | 4 |
| 96696 | B1112 REV D | | 1 | 5 |

NATIONAL STOCK NUMBER AND PART NUMBER INDEX

| FSCM | | PART NUMBER INDEX | | FIG. | ITEM |
|-------|------------------|-------------------|--|------|------|
| | | PART NUMBER | | | |
| 96696 | B1115 | | | 4 | 5 |
| 96696 | B1116 REV B | | | 6 | 5 |
| 96696 | B1146 | | | 6 | 6 |
| 96696 | B1147 | | | 1 | 11 |
| | | | | 9 | 4 |
| 96696 | B3361 REV C | 6135-01-104-7885 | | 2 | 7 |
| 96696 | B3405 REV B | | | 2 | 41 |
| 96696 | B3796 REV B | | | 2 | 57 |
| 96696 | B3858 REV B | | | 2 | 23 |
| 96696 | B3907 | 5930-01-037-5504 | | 3 | 36 |
| 96696 | B3907 REV A | | | 2 | 21 |
| 96696 | B4177 REV C | 6665-01-103-7761 | | 1 | 3 |
| 96696 | B4623 | 6665-01-103-7686 | | 5 | 28 |
| 96696 | B4625 | | | 1 | 9 |
| 96696 | B4627 | | | 9 | 6 |
| 96696 | B4629 | | | 9 | 5 |
| 96696 | B5256 REV A | 5950-01-103-7759 | | 3 | 37 |
| 96696 | B5308 | | | 9 | 1 |
| 96696 | B8658 | | | 7 | 7 |
| 96696 | C-7206 | | | 7 | 8 |
| 96696 | C-7339 | 5935-01-204-6024 | | 7 | 24 |
| 96696 | C-7340 | 6665-01-181-2478 | | 7 | 22 |
| 96696 | C-7357 | | | 7 | 1 |
| 81349 | CMR05F101GODR | 5910-01-043-6892 | | 3 | 2 |
| | | | | 8 | 4 |
| 81349 | CMR06F471G0DR | 5910-01-029-8907 | | 3 | 13 |
| 81349 | CMR06F472G0DR | 5910-01-030-9211 | | 3 | 12 |
| 81349 | CQR29A1MA474G3P | 5910-01-044-2688 | | 3 | 10 |
| 81349 | CQ09A1PA473F3 | 5910-01-022-8983 | | 3 | 11 |
| 96696 | C1025 REV G | | | 2 | 4 |
| 96696 | C1103 REV A | 6625-01-101-6809 | | 2 | 20 |
| 29943 | C224-W/#200 | | | 9 | 2 |
| 96696 | C4178 REV H | | | 6 | 9 |
| 96696 | C4181 | | | 5 | 26 |
| 96696 | C4622 | 6665-01-103-7688 | | 5 | 1 |
| 18324 | C5474N/883 | | | 8 | 24 |
| 80058 | DT590A/PDR-56F | 6665-01-151-4082 | | 1 | 6 |
| 96696 | D1019 REV Y | | | 2 | 43 |
| 96696 | D1020 | | | 4 | 2 |
| 96696 | D1024 | | | 5 | 14 |
| 96696 | D3853 REV B | 6665-01-118-7352 | | 1 | 1 |
| 96696 | D3854 REV B | | | 1 | 10 |
| 96696 | D4179 | | | 1 | 8 |
| 96696 | D4517 REV A | 5999-01-101-6805 | | 2 | 30 |
| 96696 | D4609 REV B | | | 1 | 2 |
| 99017 | EC15 | 5340-00-063-5446 | | 6 | 11 |
| 80058 | H-43B/U | 5965-00-651-7372 | | 1 | 4 |
| 04222 | HVD-6-2KV10000 A | | | 3 | 1 |
| | PORM 10 PCT | | | | |
| 81349 | JANTX1N483B | 5961-00-235-8678 | | 3 | 16 |
| 81349 | JAN1N647 | 5961-00-985-4900 | | 3 | 15 |

NATIONAL STOCK NUMBER AND PART NUMBER INDEX

| | | PART NUMBER INDEX | | | |
|-------|-----------------|-------------------|--|------|------|
| FSCM | | PART NUMBER | | FIG. | ITEM |
| 81349 | JAN1N914 | 5961-00-842-9864 | | 8 | 6 |
| 81349 | JAN2N2945A | 5961-00-121-9865 | | 3 | 19 |
| 81349 | JAN2N3251A | 5961-00-911-6015 | | 3 | 18 |
| | | | | 8 | 8 |
| 81349 | JAN2N930 | 5961-00-226-8579 | | 3 | 17 |
| | | | | 8 | 7 |
| 71468 | MC-14E-10-6PN | 5935-00-617-2078 | | 8 | 25 |
| 71468 | MC14E10-6SN | 5935-00-681-5789 | | 2 | 44 |
| 96906 | MS15795-803 | 5310-00-595-6211 | | 2 | 50 |
| 96906 | MS16633-9 | 5365-00-205-4208 | | 2 | 36 |
| 96906 | MS25237-338 | 6240-00-542-6571 | | 2 | 54 |
| 96906 | MS28775-111 | 5330-00-579-8108 | | 2 | 47 |
| 96906 | MS35198-33 | 5305-00-954-5634 | | 5 | 6 |
| 96906 | MS35206-214 | 5305-00-993-0190 | | 2 | 55 |
| 96906 | MS35206-215 | 5305-00-889-2997 | | 5 | 24 |
| 96906 | MS35206-217 | 5305-00-889-2999 | | 2 | 38 |
| 96906 | MS35215-52 | 5305-00-059-8382 | | 2 | 15 |
| 96906 | MS35215-53 | 5305-00-206-2508 | | 2 | 12 |
| | | | | 2 | 32 |
| 96906 | MS35215-55 | 5305-00-206-2510 | | 2 | 19 |
| | | | | 2 | 25 |
| 96906 | MS35223-13 | 5305-00-405-8960 | | 5 | 3 |
| 96906 | MS35265-28 | 5305-00-582-5807 | | 6 | 1 |
| 96906 | MS35333-104 | 5310-00-939-1061 | | 2 | 24 |
| 96906 | MS35333-69 | 5310-00-543-4652 | | 7 | 16 |
| 96906 | MS35333-71 | 5310-00-616-3555 | | 2 | 31 |
| | | | | 2 | 34 |
| 96906 | MS35338-97 | 5310-00-184-8996 | | 5 | 23 |
| 96906 | MS35649-242 | 5310-00-934-9739 | | 2 | 52 |
| 96906 | MS35649-264 | 5310-00-934-9761 | | 2 | 33 |
| 96906 | MS51859-4 | 5310-00-213-4960 | | 2 | 56 |
| 96906 | MS51957-1 | 5305-00-054-5635 | | 7 | 15 |
| 96906 | MS51963-20 | 5305-00-719-5329 | | 2 | 1 |
| 96906 | MS51963-23 | 5305-00-719-5338 | | 2 | 2 |
| 96906 | MS77068-1 | 5940-00-682-2477 | | 8 | 27 |
| 81349 | M38510/05202BCB | 5962-01-025-2594 | | 3 | 38 |
| 81349 | M38510/11202BCB | | | 8 | 23 |
| 81349 | M39003-01-2967 | 5910-00-010-8158 | | 3 | 4 |
| 81349 | M39003-01-2970 | 5910-00-189-2818 | | 3 | 14 |
| 81349 | M39003-01-2996 | 5910-00-114-0787 | | 3 | 6 |
| 81349 | M39003-01-3097 | 5910-00-010-8192 | | 3 | 9 |
| | | | | 8 | 5 |
| 81349 | M39003/01-2977 | 5910-00-189-4248 | | 3 | 5 |
| 81349 | M39003/01-2994 | 5910-00-156-7293 | | 3 | 7 |
| 81349 | M39012/25-0006 | 5935-00-885-2264 | | 2 | 14 |
| 81349 | M39014-02-1338 | 5910-00-010-8718 | | 7 | 28 |
| 81349 | M39014/01-1321 | 5910-00-112-4337 | | 8 | 3 |
| 81349 | M39014/01-1575 | 5910-00-124-0659 | | 3 | 3 |
| | | | | 8 | 2 |
| 81349 | M39014/02-1350 | 5910-00-113-5499 | | 3 | 8 |
| 81349 | M5423/10-01 | 5930-00-950-4541 | | 2 | 10 |

NATIONAL STOCK NUMBER AND PART NUMBER INDEX

| FSCM | PART NUMBER INDEX | | FIG. | ITEM |
|-------|-------------------|------------------|------|------|
| | | PART NUMBER | | |
| 81349 | RCR05G102JS | 5905-00-458-9500 | 8 | 10 |
| 81349 | RCR05G103JS | 5905-01-035-5065 | 8 | 11 |
| 81349 | RCR05G104JS | 5905-00-458-9346 | 8 | 16 |
| 81349 | RCR05G221JS | 5905-00-177-7486 | 8 | 9 |
| 81349 | RCR05G224JS | 5905-00-412-4044 | 8 | 17 |
| 81349 | RCR05G273JS | 5905-00-407-0084 | 8 | 13 |
| 81349 | RCR05G333JS | 5905-00-617-5090 | 8 | 12 |
| | | | 8 | 14 |
| 81349 | RCR05G753JS | 5905-00-407-0089 | 8 | 15 |
| 81349 | RCR07G104JS | 5905-00-110-0388 | 3 | 25 |
| 81349 | RCR07G106JS | 5905-00-121-9919 | 3 | 22 |
| | | | 7 | 30 |
| | | | 8 | 19 |
| 81349 | RCR07G184JS | 5905-00-114-5344 | 3 | 29 |
| 81349 | RCR07G223JS | 5905-00-116-8556 | 3 | 21 |
| 81349 | RCR07G226JS | 5905-00-126-6703 | 8 | 20 |
| 81349 | RCR07G272JS | 5905-00-111-4727 | 3 | 35 |
| 81349 | RCR07G305JS | 5905-00-121-9921 | 8 | 18 |
| 81349 | RCR07G333JS | 5905-00-118-4559 | 3 | 20 |
| 81349 | RCR07G391JS | 5905-00-121-9932 | 3 | 30 |
| 81349 | RCR07G473JS | 5905-00-141-0717 | 3 | 26 |
| 81349 | RCR07G682JS | 5905-00-110-7622 | 3 | 27 |
| 81349 | RCR07G755J | | 7 | 29 |
| 81349 | RJR26FP103P | 5905-01-066-3755 | 8 | 21 |
| 81349 | RJR26FP104P | 5905-01-082-6824 | 8 | 22 |
| 81349 | RJ12CY103 | 5905-00-483-4284 | 3 | 23 |
| 81349 | RNC55K2552FS | 5905-00-137-7226 | 3 | 33 |
| 81349 | RNC55K5622FS | 5905-00-432-6385 | 3 | 32 |
| 81349 | RNC55K6492FS | 5905-00-147-7287 | 3 | 34 |
| 81349 | RNC55K7151FS | 5905-00-004-6122 | 3 | 31 |
| 81349 | RV6LAYS253A | 5905-00-549-8222 | 3 | 28 |
| 56988 | S-3064 | | 7 | 19 |
| 80063 | SM-B-416109-1 | 5310-00-973-8660 | 2 | 13 |
| 29372 | SPA-0440-S | | 5 | 13 |
| 29372 | SPA-0632-6 | | 4 | 1 |
| 29372 | SPA0632S | 5340-00-917-0928 | 5 | 25 |
| 54590 | S83010E | | 7 | 10 |
| 02260 | UG625C/U | | 2 | 16 |
| 11769 | 00-6007-012-450A | | 2 | 28 |
| 80131 | 1N4565A | 5961-00-131-1316 | 3 | 39 |
| 16845 | 1000-483-23 | 5905-01-149-5107 | 3 | 24 |
| 07047 | 10166-N | 5365-01-087-0833 | 3 | 40 |
| 25184 | 164-7507 | | 2 | 42 |
| 25184 | 168-7507 | | 5 | 12 |
| 45681 | 2-031-C557-70 | | 7 | 9 |
| 02697 | 2-33C557-7 | | 7 | 4 |
| 83330 | 2161 | 5310-00-009-7662 | 5 | 21 |
| 83330 | 2663 | 5310-00-484-4439 | 2 | 26 |
| 83330 | 2670 | | 2 | 6 |
| | | 5970-00-153-0155 | 5 | 15 |
| 81073 | 30YY-2034 | 5930-00-755-6806 | 2 | 9 |

NATIONAL STOCK NUMBER AND PART NUMBER INDEX

| FSCM | PART NUMBER INDEX | | FIG. | ITEM |
|-------|-------------------|------------------|------|------|
| | PART NUMBER | | | |
| 96696 | 311676 | | 7 | 25 |
| 96696 | 315159 | | 7 | 20 |
| 29372 | 5PA-0632 | | 6 | 13 |
| 79136 | 5008-187-H | | 7 | 14 |
| 6K774 | 5714153020519 | | 7 | 27 |
| 11769 | 60-6007-48-28 | | 2 | 29 |
| 96696 | 600819 | | 7 | 26 |
| 73734 | 62048 | | 2 | 18 |
| 95272 | 6227-5SRS147-60 | 5330-00-727-9486 | 2 | 11 |
| 89110 | 85931-6 | | 8 | 26 |
| 49671 | 931B | 5960-01-085-3514 | 5 | 2 |
| 06540 | 9317-A140-1 | | 5 | 9 |
| 29943 | 985LS-2-RG | | 9 | 3 |

By Order of the Secretary of the Army:

Official:

JOHN A. WICKHAM, JR.
General, United States Army
Chief of Staff

R.L. DILWORTH
Brigadier General, United States Army
The Adjutant General

DISTRIBUTION:

To be distributed in accordance with DA Form 12-36 literature requirements for AN/PDR-56F.

RECOMMENDED CHANGES TO EQUIPMENT TECHNICAL PUBLICATIONS



THEN... JOT DOWN THE DOPE ABOUT IT ON THIS FORM. CAREFULLY TEAR IT OUT. FOLD IT AND DROP IT IN THE MAIL!

SOMETHING WRONG WITH THIS PUBLICATION?

FROM: (PRINT YOUR UNIT'S COMPLETE ADDRESS)
 Commander
 Stateside Army Depot
 ATTN: AMSTA-US
 Stateside, N.J. 07703-5007

DATE SENT
 10 July 1975

PUBLICATION NUMBER
 TM 11-5840-340-20P

PUBLICATION DATE
 23 Jan 78

PUBLICATION TITLE
 Radar Set AN/PRC-76

BE EXACT PIN-POINT WHERE IT IS

| PAGE NO | PARA-GRAPH | FIGURE NO | TABLE NO |
|---------|------------|-----------|----------|
| 33 | | | |
| 44 | | 19 | |
| 45 | | | |

IN THIS SPACE TELL WHAT IS WRONG AND WHAT SHOULD BE DONE ABOUT IT:

For item 2, change the NSN to read: 5835-00-134-9186.
 Reason: Accuracy.

Identify the cover on the junction box (item no. 5).
 Reason: It is a separate item and is not called out on figure 19.

Add the cover of the junction box as an item in the listing for figure 19.
 Reason: Same as above

SAMPLE

PRINTED NAME GRADE OR TITLE AND TELEPHONE NUMBER
 SSG I. M. DeSpirit of 999-1776

SIGN HERE

TEAR ALONG PERFORATED LINE

FILL IN YOUR
UNIT'S ADDRESS

FOLD BACK

DEPARTMENT OF THE ARMY

OFFICIAL BUSINESS
PENALTY FOR PRIVATE USE \$300

POSTAGE AND FEES PAID
DEPARTMENT OF THE ARMY
DOD 314



TEAR ALONG PERFORATED LINE

Commander
US Army Communications-Electronics Command
and Fort Monmouth
ATTN: AMSEL-ME-MP
Fort Monmouth, New Jersey 07703-5007

THE METRIC SYSTEM AND EQUIVALENTS

WEIGHT MEASURE

1 Centimeter = 10 Millimeters = 0.01 Meters = 0.3937 Inches
 1 Meter = 100 Centimeters = 1000 Millimeters = 39.37 Inches
 1 Kilometer = 1000 Meters = 0.621 Miles

WEIGHTS

1 Gram = 0.001 Kilograms = 1000 Milligrams = 0.035 Ounces
 1 Kilogram = 1000 Grams = 2.2 lb.
 1 Metric Ton = 1000 Kilograms = 1 Megagram = 1.1 Short Tons

LIQUID MEASURE

1 Milliliter = 0.001 Liters = 0.0338 Fluid Ounces
 1 Liter = 1000 Milliliters = 33.82 Fluid Ounces

SQUARE MEASURE

1 Sq. Centimeter = 100 Sq. Millimeters = 0.155 Sq. Inches
 1 Sq. Meter = 10,000 Sq. Centimeters = 10.76 Sq. Feet
 1 Sq. Kilometer = 1,000,000 Sq. Meters = 0.386 Sq. Miles

CUBIC MEASURE

1 Cu. Centimeter = 1000 Cu. Millimeters = 0.06 Cu. Inches
 1 Cu. Meter = 1,000,000 Cu. Centimeters = 35.31 Cu. Feet

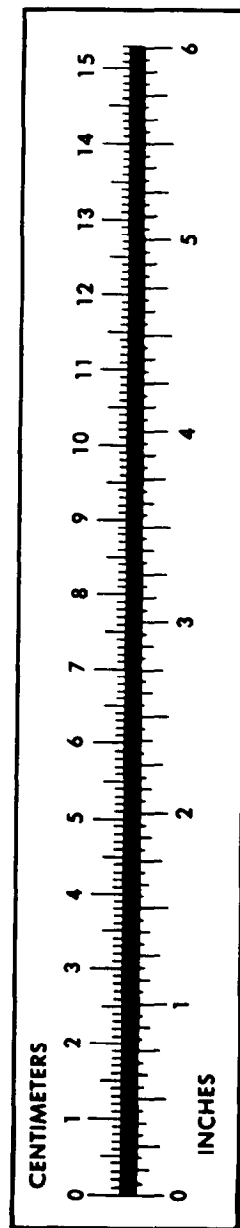
TEMPERATURE

$5/9(^{\circ}\text{F} - 32) = ^{\circ}\text{C}$
 212° Fahrenheit is equivalent to 100° Celsius
 90° Fahrenheit is equivalent to 32.2° Celsius
 32° Fahrenheit is equivalent to 0° Celsius
 $9/5^{\circ}\text{C} + 32 = ^{\circ}\text{F}$

APPROXIMATE CONVERSION FACTORS

| TO CHANGE | TO | MULTIPLY BY |
|------------------------|----------------------|-------------|
| Inches | Centimeters | 2.540 |
| Feet | Meters | 0.305 |
| Yards | Meters | 0.914 |
| Miles | Kilometers | 1.609 |
| Square Inches | Square Centimeters | 6.451 |
| Square Feet | Square Meters | 0.093 |
| Square Yards | Square Meters | 0.836 |
| Square Miles | Square Kilometers | 2.590 |
| Acres | Square Hectometers | 0.405 |
| Cubic Feet | Cubic Meters | 0.028 |
| Cubic Yards | Cubic Meters | 0.765 |
| Fluid Ounces | Milliliters | 29.573 |
| its | Liters | 0.473 |
| arts | Liters | 0.946 |
| allons | Liters | 3.785 |
| Ounces | Grams | 28.349 |
| Pounds | Kilograms | 0.454 |
| Short Tons | Metric Tons | 0.907 |
| Pound-Feet | Newton-Meters | 1.356 |
| Pounds per Square Inch | Kilopascals | 6.895 |
| Miles per Gallon | Kilometers per Liter | 0.425 |
| Miles per Hour | Kilometers per Hour | 1.609 |

| TO CHANGE | TO | MULTIPLY BY |
|--------------------|------------------------|-------------|
| Centimeters | Inches | 0.394 |
| Meters | Feet | 3.280 |
| Meters | Yards | 1.094 |
| Kilometers | Miles | 0.621 |
| Square Centimeters | Square Inches | 0.155 |
| Square Meters | Square Feet | 10.764 |
| Square Meters | Square Yards | 1.196 |
| Square Kilometers | Square Miles | 0.386 |
| Square Hectometers | Acres | 2.471 |
| Cubic Meters | Cubic Feet | 35.315 |
| Cubic Meters | Cubic Yards | 1.308 |
| Milliliters | Fluid Ounces | 0.034 |
| Liters | Pints | 2.113 |
| Liters | Quarts | 1.057 |
| ers | Gallons | 0.264 |
| ms | Ounces | 0.035 |
| ograms | Pounds | 2.205 |
| Metric Tons | Short Tons | 1.102 |
| Newton-Meters | Pounds-Feet | 0.738 |
| Kilopascals | Pounds per Square Inch | 0.145 |
| ometers per Liter | Miles per Gallon | 2.354 |
| ometers per Hour | Miles per Hour | 0.621 |



PIN: 052283-000